

## Product datasheet for **TA327796**

### PKC alpha (PRKCA) Rabbit Polyclonal Antibody

#### Product data:

Product Type:	Primary Antibodies
Applications:	WB
Recommended Dilution:	WB: 1:500-1:2000; IHC: 1:50-1:200
Reactivity:	Human, Mouse, Rat
Modifications:	Phospho-specific
Host:	Rabbit
Isotype:	IgG
Clonality:	Polyclonal
Immunogen:	The antiserum was produced against A synthesized peptide derived from human PKC alpha around the phosphorylation site of Threonine 638
Formulation:	Rabbit IgG in phosphate buffered saline , pH 7.4, 150mM NaCl, 0.02% sodium azide and 50% glycerol.
Concentration:	lot specific
Purification:	The antibody was affinity-purified from rabbit antiserum by affinity-chromatography using epitope-specific peptide.
Conjugation:	Unconjugated
Storage:	Store at -20°C as received.
Stability:	Stable for 12 months from date of receipt.
Predicted Protein Size:	80 kDa
Gene Name:	protein kinase C alpha
Database Link:	<a href="#">NP_002728</a> <a href="#">Entrez Gene 18750 MouseEntrez Gene 24680 RatEntrez Gene 5578 Human P17252</a>
Background:	PKC alpha is an AGC kinase of the PKC family. A classical PKC downstream of many mitogenic and receptors. Classical PKCs are calcium-dependent enzymes that are activated by phosphatidylserine, diacylglycerol and phorbol esters.
Synonyms:	AAG6; PKC-alpha; PKCA; PRKACA

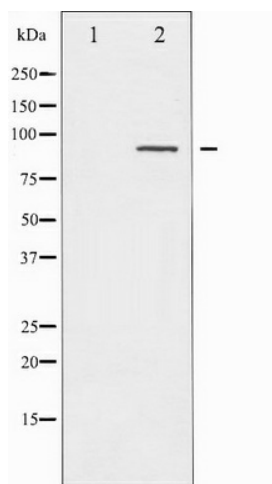


[View online »](#)

**Protein Families:** Druggable Genome, ES Cell Differentiation/IPS, Protein Kinase

**Protein Pathways:** Calcium signaling pathway, ErbB signaling pathway, Fc epsilon RI signaling pathway, Fc gamma R-mediated phagocytosis, Focal adhesion, Gap junction, Glioma, GnRH signaling pathway, Leukocyte transendothelial migration, Long-term depression, Long-term potentiation, MAPK signaling pathway, Melanogenesis, Natural killer cell mediated cytotoxicity, Non-small cell lung cancer, Pathogenic Escherichia coli infection, Pathways in cancer, Phosphatidylinositol signaling system, Tight junction, Vascular smooth muscle contraction, VEGF signaling pathway, Vibrio cholerae infection, Wnt signaling pathway

**Product images:**



Western blot analysis of PKC alpha phosphorylation expression in UV treated NIH-3T3 whole cell lysates, The lane on the left is treated with the antigen-specific peptide.