

## Product datasheet for **TA327788**

### PKC beta 1 (PRKCB) Rabbit Polyclonal Antibody

#### Product data:

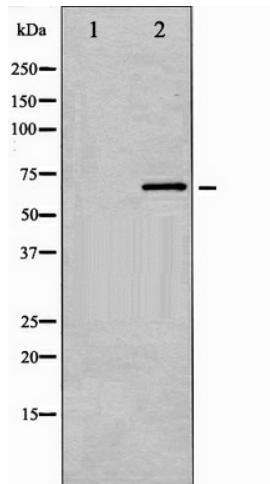
Product Type:	Primary Antibodies
Applications:	WB
Recommended Dilution:	WB: 1:500-1:2000
Reactivity:	Human, Mouse, Rat
Modifications:	Phospho-specific
Host:	Rabbit
Isotype:	IgG
Clonality:	Polyclonal
Immunogen:	The antiserum was produced against A synthesized peptide derived from human PKCB around the phosphorylation site of Serine 661
Formulation:	Rabbit IgG in phosphate buffered saline , pH 7.4, 150mM NaCl, 0.02% sodium azide and 50% glycerol.
Concentration:	lot specific
Purification:	The antibody was affinity-purified from rabbit antiserum by affinity-chromatography using epitope-specific peptide.
Conjugation:	Unconjugated
Storage:	Store at -20°C as received.
Stability:	Stable for 12 months from date of receipt.
Predicted Protein Size:	77 kDa
Gene Name:	protein kinase C beta
Database Link:	<a href="#">NP_002729</a> <a href="#">Entrez Gene 18751 Mouse</a> <a href="#">Entrez Gene 25023 Rat</a> <a href="#">Entrez Gene 5579 Human</a> <a href="#">P05771</a>
Background:	Pim1 is thought to play a role in signal transduction in blood cells. May affect the structure or silencing of chromatin by phosphorylating HP1 gamma/CBX3.
Synonyms:	PKC-beta; PKCB; PRKCB1; PRKCB2
Protein Families:	Druggable Genome, Protein Kinase



[View online »](#)

**Protein Pathways:**

B cell receptor signaling pathway, Calcium signaling pathway, Chemokine signaling pathway, ErbB signaling pathway, Fc epsilon RI signaling pathway, Fc gamma R-mediated phagocytosis, Focal adhesion, Gap junction, Glioma, GnRH signaling pathway, Leukocyte transendothelial migration, Long-term depression, Long-term potentiation, MAPK signaling pathway, Melanogenesis, Natural killer cell mediated cytotoxicity, Non-small cell lung cancer, Pathways in cancer, Phosphatidylinositol signaling system, Tight junction, Vascular smooth muscle contraction, VEGF signaling pathway, Vibrio cholerae infection, Wnt signaling pathway

**Product images:**

Western blot analysis of PKCB phosphorylation expression in heatshock treated HeLa whole cell lysates, The lane on the left is treated with the antigen-specific peptide.