

Product datasheet for **TA327784**

Estrogen Receptor 1 (ESR1) Rabbit Polyclonal Antibody

Product data:

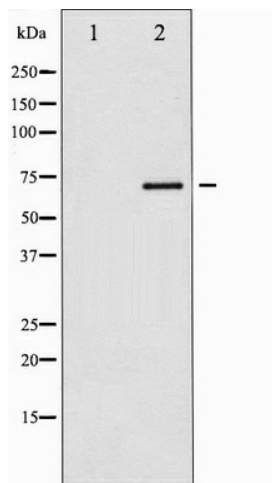
Product Type:	Primary Antibodies
Applications:	WB
Recommended Dilution:	WB: 1:500-1:2000; IHC: 1:50-1:200
Reactivity:	Human, Mouse
Modifications:	Phospho-specific
Host:	Rabbit
Isotype:	IgG
Clonality:	Polyclonal
Immunogen:	The antiserum was produced against A synthesized peptide derived from human Estrogen Receptor- alpha around the phosphorylation site of Serine 118
Formulation:	Rabbit IgG in phosphate buffered saline , pH 7.4, 150mM NaCl, 0.02% sodium azide and 50% glycerol.
Concentration:	lot specific
Purification:	The antibody was affinity-purified from rabbit antiserum by affinity-chromatography using epitope-specific peptide.
Conjugation:	Unconjugated
Storage:	Store at -20°C as received.
Stability:	Stable for 12 months from date of receipt.
Predicted Protein Size:	66 kDa
Gene Name:	estrogen receptor 1
Database Link:	NP_000116 Entrez Gene 13982 Mouse Entrez Gene 2099 Human P03372
Background:	ER-alpha is a nuclear hormone receptor and transcription factor. Regulates gene expression and affects cellular proliferation and differentiation in target tissues. Two splice-variant isoforms have been described.
Synonyms:	ER; Era; ESR; ESRA; ESTRR; NR3A1



[View online »](#)

Protein Families: Druggable Genome, Nuclear Hormone Receptor, Transcription Factors

Product images:



Western blot analysis of Estrogen Receptor- alpha phosphorylation expression in Estradiol treated MCF7 whole cell lysates, The lane on the left is treated with the antigen-specific peptide.