

Product datasheet for **TA327777**

Actin Regulatory Protein CAPG (CAPG) Goat Polyclonal Antibody

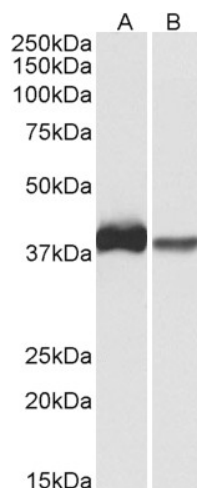
Product data:

| | |
|-----------------------|--|
| Product Type: | Primary Antibodies |
| Applications: | WB |
| Recommended Dilution: | WB: 0.1-0.3 µg/ml. |
| Reactivity: | Human, Mouse, Rat, Pig (Expected from sequence similarity: Dog) |
| Host: | Goat |
| Isotype: | IgG |
| Clonality: | Polyclonal |
| Immunogen: | internal region (KAQVEIVTDGEEP) |
| Formulation: | Supplied at 0.5 mg/ml in Tris saline, 0.02% sodium azide, pH7.3 with 0.5% bovine serum albumin. Aliquot and store at -20°C. Minimize freezing and thawing. |
| Concentration: | lot specific |
| Purification: | Purified from goat serum by ammonium sulphate precipitation followed by antigen affinity chromatography using the immunizing peptide. |
| Conjugation: | Unconjugated |
| Storage: | Store at -20°C as received. |
| Stability: | Stable for 12 months from date of receipt. |
| Gene Name: | capping actin protein, gelsolin like |
| Database Link: | NP_001738 Entrez Gene 12332 Mouse Entrez Gene 297339 Rat Entrez Gene 483082 Dog Entrez Gene 822 Human P40121 |
| Synonyms: | AFCP; HEL-S-66; MCP |

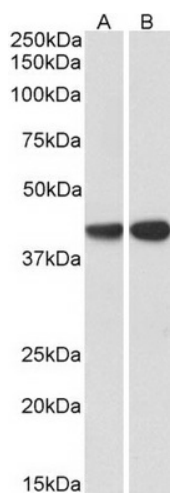


[View online »](#)

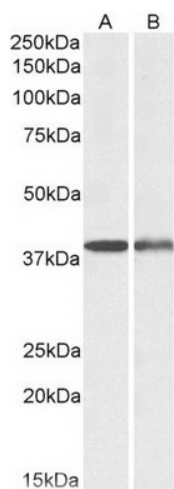
Product images:



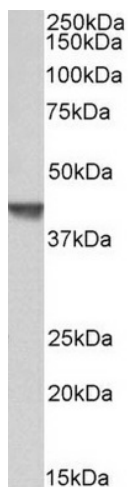
TA327777 (0.3 ug/ml) staining of U937 (A) and Human Spleen (B) lysates (35 ug protein in RIPA buffer). Primary incubation was 1 hour. Detected by chemiluminescence.



TA327777 (0.3 ug/ml) staining of Peripheral Blood Lymphocytes ([TA327776] lane A), TA327777 lane B) lysates (35 ug protein in RIPA buffer). Primary incubation was 1 hour. Detected by chemiluminescence.



TA327777 (0.1 ug/ml) staining of Mouse (A) and Rat Spleen (B) lysates (35 ug protein in RIPA buffer). Primary incubation was 1 hour. Detected by chemiluminescence.



TA327777 (0.3 ug/ml) staining of Pig Spleen lysate (35 ug protein in RIPA buffer). Primary incubation was 1 hour. Detected by chemiluminescence.