

Product datasheet for **TA327776**

Actin Regulatory Protein CAPG (CAPG) Goat Polyclonal Antibody

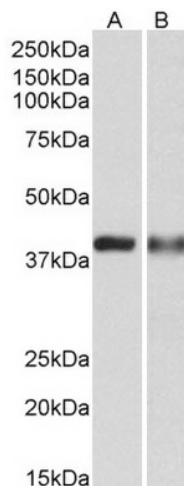
Product data:

Product Type:	Primary Antibodies
Applications:	FC, PEP-ELISA, WB
Recommended Dilution:	WB: 0.3-1 µg/mL
Reactivity:	Human (Expected from sequence similarity: Dog)
Host:	Goat
Isotype:	IgG
Clonality:	Polyclonal
Immunogen:	internal region (NIRATERALNWDS)
Formulation:	Supplied at 0.5 mg/ml in Tris saline, 0.02% sodium azide, pH7.3 with 0.5% bovine serum albumin. Aliquot and store at -20°C. Minimize freezing and thawing.
Concentration:	lot specific
Purification:	Purified from goat serum by ammonium sulphate precipitation followed by antigen affinity chromatography using the immunizing peptide.
Conjugation:	Unconjugated
Storage:	Store at -20°C as received.
Stability:	Stable for 12 months from date of receipt.
Gene Name:	capping actin protein, gelsolin like
Database Link:	NP_001738 Entrez Gene 483082 Dog Entrez Gene 822 Human P40121
Synonyms:	AFCP; HEL-S-66; MCP
Note:	Approx 38kDa band observed in lysates of cell line U937 and of Human Spleen (calculated MW of 38.5kDa according to NP_001738.2). In Peripheral Blood Lymphocytes, the observed band runs as ~40kDa. Recommended concentration: 0.3-1µg/ml.

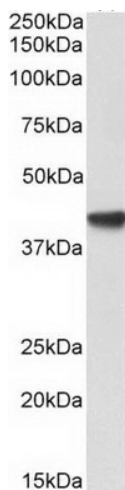


[View online »](#)

Product images:



Anti-CAPG antibody (0.3ug/ml) staining of U937 (A) and Human Spleen (B) lysates (35ug protein in RIPA buffer). Primary incubation was 1 hour. Detected by chemiluminescence.



Anti-CAPG antibody (0.3ug/ml) staining of Peripheral Blood Lymphocytes lysates (35ug protein in RIPA buffer). Primary incubation was 1 hour. Detected by chemiluminescence.