

## Product datasheet for **TA327772**

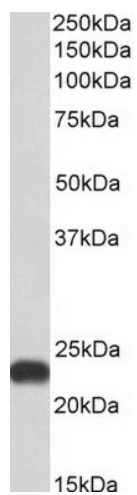
### BLVRB Goat Polyclonal Antibody

#### Product data:

Product Type:	Primary Antibodies
Applications:	WB
Recommended Dilution:	WB: 0.3-1 ug/mL
Reactivity:	Human
Host:	Goat
Isotype:	IgG
Clonality:	Polyclonal
Immunogen:	C Terminus (TTDEYDGHSTYP)
Formulation:	Supplied at 0.5 mg/ml in Tris saline, 0.02% sodium azide, pH7.3 with 0.5% bovine serum albumin. Aliquot and store at -20°C. Minimize freezing and thawing.
Concentration:	lot specific
Purification:	Purified from goat serum by ammonium sulphate precipitation followed by antigen affinity chromatography using the immunizing peptide.
Conjugation:	Unconjugated
Storage:	Store at -20°C as received.
Stability:	Stable for 12 months from date of receipt.
Gene Name:	biliverdin reductase B
Database Link:	<a href="#">NP_000704</a> <a href="#">Entrez Gene 645 Human</a> <a href="#">P30043</a>
Synonyms:	BVRB; FLR; HEL-S-10; SDR43U1
Note:	Approx 23kDa band observed in Human Liver lysates (calculated MW of 22.1kDa according to NP_000704.1). Recommended concentration: 0.3-1µg/ml.
Protein Pathways:	Porphyryin and chlorophyll metabolism



[View online »](#)

**Product images:**

Anti-BLVRB antibody (0.3ug/ml) staining of Human Liver lysate (35ug protein in RIPA buffer). Primary incubation was 1 hour. Detected by chemiluminescence.