

Product datasheet for **TA327771**

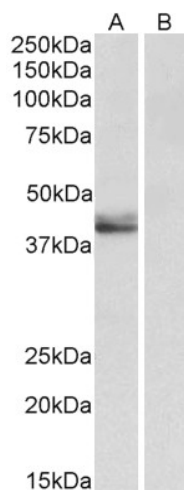
SERPINB1 Goat Polyclonal Antibody

Product data:

Product Type:	Primary Antibodies
Applications:	WB
Recommended Dilution:	WB: 0.5-2 ug/mL
Reactivity:	Human
Host:	Goat
Isotype:	IgG
Clonality:	Polyclonal
Immunogen:	internal region (KTINQWVKGQTEGK)
Formulation:	Supplied at 0.5 mg/ml in Tris saline, 0.02% sodium azide, pH7.3 with 0.5% bovine serum albumin. Aliquot and store at -20°C. Minimize freezing and thawing.
Concentration:	lot specific
Purification:	Purified from goat serum by ammonium sulphate precipitation followed by antigen affinity chromatography using the immunizing peptide.
Conjugation:	Unconjugated
Storage:	Store at -20°C as received.
Stability:	Stable for 12 months from date of receipt.
Gene Name:	serpin family B member 1
Database Link:	NP_109591 Entrez Gene 1992 Human P30740
Synonyms:	EI; ELANH2; HEL-S-27; HEL57; LEI; M; MNEI; NEI; PI-2; PI2
Note:	Approx 42-45kDa bands observed in Human Placenta lysates (calculated MW of 42.7kDa according to NP_109591.1). The fainter 45kDa band likely represents the acetylated form. Both bands are blocked by the immunizing peptide. Recommended concentration: 0.5-2µg/ml.
Protein Families:	Druggable Genome



[View online »](#)

Product images:

Anti-SERPINB1 antibody (0.5ug/ml) staining of Human Placenta lysate (35ug protein in RIPA buffer) with (B) and without (A) blocking with the immunizing peptide. Primary incubation was 1 hour. Detected by chemiluminescence.