

Product datasheet for TA327769

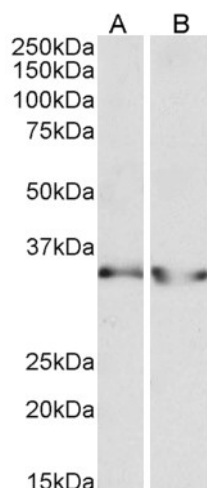
Lactate Dehydrogenase B (LDHB) Goat Polyclonal Antibody

Product data:

Product Type:	Primary Antibodies
Applications:	WB
Recommended Dilution:	WB: 0.3-1 ug/mL
Reactivity:	Human
Host:	Goat
Isotype:	IgG
Clonality:	Polyclonal
Immunogen:	internal region (near N terminus) (EEATVPNNKIT)
Formulation:	Supplied at 0.5 mg/ml in Tris saline, 0.02% sodium azide, pH7.3 with 0.5% bovine serum albumin. Aliquot and store at -20°C. Minimize freezing and thawing.
Concentration:	lot specific
Purification:	Purified from goat serum by ammonium sulphate precipitation followed by antigen affinity chromatography using the immunizing peptide.
Conjugation:	Unconjugated
Storage:	Store at -20°C as received.
Stability:	Stable for 12 months from date of receipt.
Gene Name:	lactate dehydrogenase B
Database Link:	NP_002291 Entrez Gene 3945 Human P07195
Synonyms:	HEL-S-281; LDH-B; LDH-H; LDHBD; TRG-5
Note:	Approx 35kDa band observed in Human Heart and Kidney lysates (calculated MW of 36.6kDa according to NP_002291.1). Recommended concentration: 0.3-1µg/ml.
Protein Families:	Druggable Genome
Protein Pathways:	Cysteine and methionine metabolism, Glycolysis / Gluconeogenesis, Metabolic pathways, Propanoate metabolism, Pyruvate metabolism


[View online »](#)

Product images:



Anti-LDHB antibody (0.3ug/ml) staining of Human Heart (A) and Human Kidney (B) lysates (35ug protein in RIPA buffer). Primary incubation was 1 hour. Detected by chemiluminescence.