

Product datasheet for **TA327768**

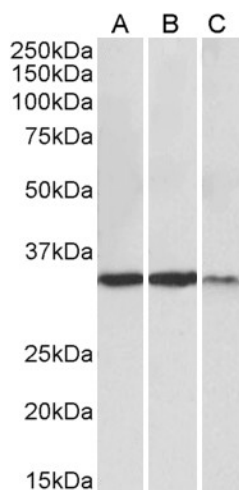
LDHA Goat Polyclonal Antibody

Product data:

Product Type:	Primary Antibodies
Applications:	WB
Recommended Dilution:	WB: 0.3-1 ug/mL
Reactivity:	Human
Host:	Goat
Isotype:	IgG
Clonality:	Polyclonal
Immunogen:	C Terminus (SDLVKVTLTSE)
Formulation:	Supplied at 0.5 mg/ml in Tris saline, 0.02% sodium azide, pH7.3 with 0.5% bovine serum albumin. Aliquot and store at -20°C. Minimize freezing and thawing.
Concentration:	lot specific
Purification:	Purified from goat serum by ammonium sulphate precipitation followed by antigen affinity chromatography using the immunizing peptide.
Conjugation:	Unconjugated
Storage:	Store at -20°C as received.
Stability:	Stable for 12 months from date of receipt.
Gene Name:	lactate dehydrogenase A
Database Link:	NP_005557 Entrez Gene 3939 Human P00338
Synonyms:	GSD11; HEL-S-133P; LDHM; PIG19
Note:	Approx 35kDa band observed in Human Heart, Skeletal Muscle and Kidney lysates (calculated MW of 36.7kDa according to NP_005557.1). Recommended concentration: 0.3-1µg/ml.
Protein Families:	Druggable Genome
Protein Pathways:	Cysteine and methionine metabolism, Glycolysis / Gluconeogenesis, Metabolic pathways, Propanoate metabolism, Pyruvate metabolism



[View online »](#)

Product images:

Anti-LDHA antibody (0.3ug/ml) staining of Heart (A), Skeletal Muscle (B) and Kidney (C) lysates (35ug protein in RIPA buffer). Primary incubation was 1 hour. Detected by chemiluminescence.