

Product datasheet for **TA327766**

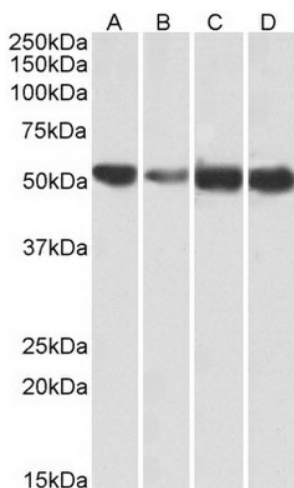
ATP5A (ATP5A1) Goat Polyclonal Antibody

Product data:

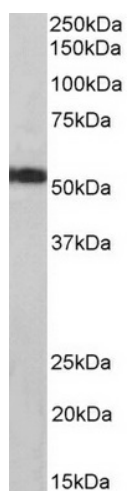
Product Type:	Primary Antibodies
Applications:	WB
Recommended Dilution:	WB: 0.01-0.03 µg/ml.
Reactivity:	Human, Mouse, Rat, Pig (Expected from sequence similarity: Dog, Cow)
Host:	Goat
Isotype:	IgG
Clonality:	Polyclonal
Immunogen:	internal region (near N terminus) (RVHGLRNVQAE)
Formulation:	Supplied at 0.5 mg/ml in Tris saline, 0.02% sodium azide, pH7.3 with 0.5% bovine serum albumin. Aliquot and store at -20°C. Minimize freezing and thawing.
Concentration:	lot specific
Purification:	Purified from goat serum by ammonium sulphate precipitation followed by antigen affinity chromatography using the immunizing peptide.
Conjugation:	Unconjugated
Storage:	Store at -20°C as received.
Stability:	Stable for 12 months from date of receipt.
Gene Name:	ATP synthase, H ⁺ transporting, mitochondrial F1 complex, alpha subunit 1, cardiac muscle
Database Link:	NP_004037 Entrez Gene 11946 Mouse Entrez Gene 65262 Rat Entrez Gene 480149 Dog Entrez Gene 498 Human P25705
Synonyms:	ATP5A; ATP5AL2; ATPM; COXPD22; hATP1; HEL-S-123m; MC5DN4; MOM2; OMR; ORM
Note:	Approx 52kDa band observed in Human, Mouse and Rat Heart lysates (calculated MW of 54.5kDa according to NP_001001935.1). Recommended concentration: 0.01-0.03µg/ml.
Protein Families:	Druggable Genome
Protein Pathways:	Alzheimer's disease, Huntington's disease, Metabolic pathways, Oxidative phosphorylation, Parkinson's disease



[View online »](#)

Product images:


TA327766 (0.01 ug/ml) staining of Human (A), fetal Mouse (B), adult Mouse (C) and adult Rat (D) Heart lysates (35 ug protein in RIPA buffer). Primary incubation was 1 hour. Detected by chemiluminescence.



TA327766 (0.01 ug/ml) staining of Pig Heart lysates (35 ug protein in RIPA buffer). Primary incubation was 1 hour. Detected by chemiluminescence.