

Product datasheet for **TA327765**

Calreticulin (CALR) Goat Polyclonal Antibody

Product data:

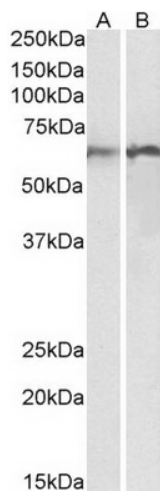
Product Type:	Primary Antibodies
Applications:	PEP-ELISA, WB
Recommended Dilution:	WB: 0.01-0.03 ug/mL
Reactivity:	Human (Expected from sequence similarity: Mouse, Rat, Dog, Pig, Cow)
Host:	Goat
Isotype:	IgG
Clonality:	Polyclonal
Immunogen:	internal region (HPEIDNPEYSPDPS)
Formulation:	Supplied at 0.5 mg/ml in Tris saline, 0.02% sodium azide, pH7.3 with 0.5% bovine serum albumin. Aliquot and store at -20°C. Minimize freezing and thawing.
Concentration:	lot specific
Purification:	Purified from goat serum by ammonium sulphate precipitation followed by antigen affinity chromatography using the immunizing peptide.
Conjugation:	Unconjugated
Storage:	Store at -20°C as received.
Stability:	Stable for 12 months from date of receipt.
Gene Name:	calreticulin
Database Link:	NP_004334 Entrez Gene 12317 Mouse Entrez Gene 64202 Rat Entrez Gene 476694 Dog Entrez Gene 811 Human P27797
Synonyms:	cC1qR; CRT; HEL-S-99n; RO; SSA
Note:	Approx 60kDa band observed in Human and Rat Lung lysates (calculated MW of 48.1kDa according to NP_004334.1). These bands correspond to earlier findings in literature with different antibodies (Conway et al, J Biol Chem. 1995 Jul 14;270(28):17011-6. PMID: 7622522). Recommended concentration: 0.01-0.03µg/ml.
Protein Families:	Druggable Genome, Secreted Protein, Transcription Factors



[View online »](#)

Protein Pathways: Antigen processing and presentation

Product images:



Anti-CALR antibody (0.01ug/ml) staining of Human (A) and Rat (B) Lung lysates (35ug protein in RIPA buffer). Primary incubation was 1 hour. Detected by chemiluminescence.