

Product datasheet for **TA327759**

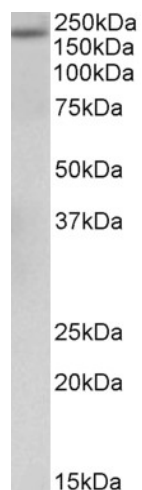
alpha 2 Macroglobulin (A2M) Goat Polyclonal Antibody

Product data:

Product Type:	Primary Antibodies
Applications:	WB
Recommended Dilution:	WB: 0.5-2 ug/mL
Reactivity:	Human
Host:	Goat
Isotype:	IgG
Clonality:	Polyclonal
Immunogen:	internal region (TSLTVRVNYKDRSP)
Formulation:	Supplied at 0.5 mg/ml in Tris saline, 0.02% sodium azide, pH7.3 with 0.5% bovine serum albumin. Aliquot and store at -20°C. Minimize freezing and thawing.
Concentration:	lot specific
Purification:	Purified from goat serum by ammonium sulphate precipitation followed by antigen affinity chromatography using the immunizing peptide.
Conjugation:	Unconjugated
Storage:	Store at -20°C as received.
Stability:	Stable for 12 months from date of receipt.
Gene Name:	alpha-2-macroglobulin
Database Link:	NP_000005 Entrez Gene 2 Human P01023
Synonyms:	A2MD; CPAMD5; FWP007; S863-7
Note:	Approx 200kDa band observed in Human Albumin-depleted Serum lysates (calculated MW of 163kDa according to NP_000005.2). The observed molecular weight corresponds to the glycosylated form. Recommended concentration: 0.5-2µg/ml.
Protein Families:	Druggable Genome, Secreted Protein
Protein Pathways:	Complement and coagulation cascades



[View online »](#)

Product images:

Anti-A2M antibody (0.5ug/ml) staining of Human Albumin-depleted Serum lysate (35ug protein in RIPA buffer). Primary incubation was 1 hour. Detected by chemiluminescence.