

Product datasheet for **TA327758**

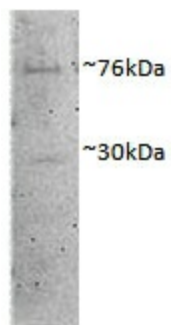
DVL1 Goat Polyclonal Antibody

Product data:

Product Type:	Primary Antibodies
Applications:	WB
Recommended Dilution:	WB: 1-3 ug/mL
Reactivity:	Pig (Expected from sequence similarity: Human, Mouse, Rat, Cow)
Host:	Goat
Isotype:	IgG
Clonality:	Polyclonal
Immunogen:	N Terminus (KLPVAPERVTLAD)
Formulation:	Supplied at 0.5 mg/ml in Tris saline, 0.02% sodium azide, pH7.3 with 0.5% bovine serum albumin. Aliquot and store at -20°C. Minimize freezing and thawing.
Concentration:	lot specific
Purification:	Purified from goat serum by ammonium sulphate precipitation followed by antigen affinity chromatography using the immunizing peptide.
Conjugation:	Unconjugated
Storage:	Store at -20°C as received.
Stability:	Stable for 12 months from date of receipt.
Gene Name:	dishevelled segment polarity protein 1
Database Link:	NP_004412 Entrez Gene 13542 Mouse Entrez Gene 83721 Rat Entrez Gene 1855 Human O14640
Synonyms:	DRS2; DVL; DVL1L1; DVL1P1
Note:	Approx 76+30kDa bands observed in Porcine MII Oocytes lysates (calculated MW of 75.5kDa according to XP_003127548.3). Recommended concentration: 1-3µg/ml.
Protein Families:	Druggable Genome, ES Cell Differentiation/IPS
Protein Pathways:	Basal cell carcinoma, Colorectal cancer, Melanogenesis, Notch signaling pathway, Pathways in cancer, Wnt signaling pathway



[View online »](#)

Product images:

Anti-Dvl1 antibody (1ug/ml) staining of Porcine MII Oocytes lysate (35ug protein in RIPA buffer). Primary incubation was overnight. Detected by chemiluminescence.