

Product datasheet for **TA327757**

GOT2 Goat Polyclonal Antibody

Product data:

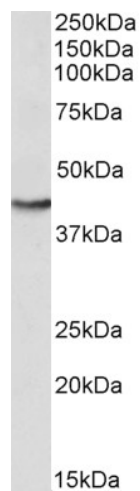
Product Type:	Primary Antibodies
Applications:	WB
Recommended Dilution:	WB: 0.3-1 µg/mL
Reactivity:	Human (Expected from sequence similarity: Mouse, Rat, Dog, Pig, Cow)
Host:	Goat
Isotype:	IgG
Clonality:	Polyclonal
Immunogen:	internal region (QGYRYDPKTCGFD)
Formulation:	Supplied at 0.5 mg/ml in Tris saline, 0.02% sodium azide, pH7.3 with 0.5% bovine serum albumin. Aliquot and store at -20°C. Minimize freezing and thawing.
Concentration:	lot specific
Purification:	Purified from goat serum by ammonium sulphate precipitation followed by antigen affinity chromatography using the immunizing peptide.
Conjugation:	Unconjugated
Storage:	Store at -20°C as received.
Stability:	Stable for 12 months from date of receipt.
Gene Name:	glutamic-oxaloacetic transaminase 2
Database Link:	NP_002071 Entrez Gene 14719 Mouse Entrez Gene 25721 Rat Entrez Gene 478103 Dog Entrez Gene 2806 Human P00505
Synonyms:	KAT4; KATIV; mitAAT
Note:	Approx 45kDa band observed in lysates of cell line HepG2 (calculated MW of 47.5kDa according to NP_002071.2). Recommended concentration: 0.3-1µg/ml.
Protein Families:	Stem cell - Pluripotency



[View online »](#)

Protein Pathways:

Alanine, aspartate and glutamate metabolism, Arginine and proline metabolism, Cysteine and methionine metabolism, Metabolic pathways, Phenylalanine, tyrosine and tryptophan biosynthesis, Phenylalanine metabolism, Tyrosine metabolism

Product images:

Anti-GOT2 antibody (0.3ug/ml) staining of HepG2 lysate (35ug protein in RIPA buffer). Primary incubation was 1 hour. Detected by chemiluminescence.