

Product datasheet for **TA327754**

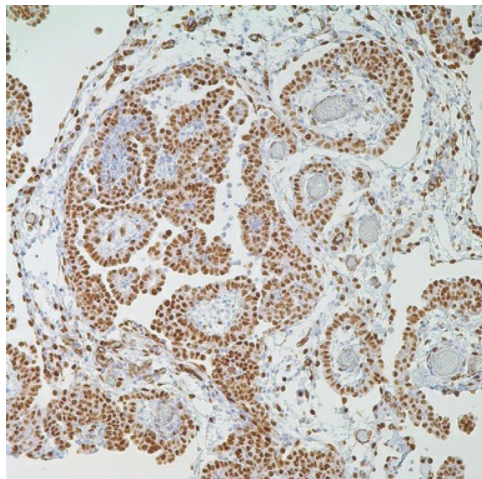
Wilms Tumor Protein (WT1) Mouse Monoclonal Antibody [Clone ID: 6F-H2]

Product data:

Product Type:	Primary Antibodies
Clone Name:	6F-H2
Applications:	IHC
Recommended Dilution:	IHC: 1:100 - 1:500
Reactivity:	Human
Host:	Mouse
Isotype:	IgG1, kappa
Clonality:	Monoclonal
Formulation:	This antibody is supplied as cell culture supernatant diluted in tris buffered saline, pH 7.3-7.7, with 1% BSA and <0.1% sodium azide.
Conjugation:	Unconjugated
Storage:	Store at -20°C as received.
Stability:	Stable for 12 months from date of receipt.
Gene Name:	Wilms tumor 1
Database Link:	NP_000369 Entrez Gene 7490 Human P19544
Synonyms:	AWT1; EWS-WT1; GUD; NPHS4; WAGR; WIT-2; WT33
Note:	WT1 is a suppressor gene located on chromosome 11p13. Wilms' Tumor protein (WT1) has been identified in proliferative mesothelial cells, malignant mesothelioma, ovarian carcinoma, gonadoblastoma, nephroblastoma, and desmoplastic small round cell tumor. Lung adenocarcinomas rarely stain positive with this antibody.
Protein Families:	Druggable Genome, Transcription Factors



[View online »](#)

Product images:

Immunohistochemistry staining of Paraffin Mesothelioma tissue by WT1 antibody (dilution: 1:100 - 1:500; visualization of staining: Nuclear)