

## Product datasheet for **TA327752**

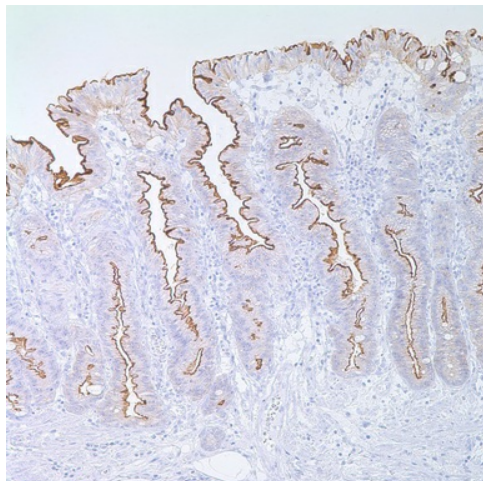
### Villin (VIL1) Mouse Monoclonal Antibody [Clone ID: CWWB1]

#### Product data:

Product Type:	Primary Antibodies
Clone Name:	CWWB1
Applications:	IHC
Recommended Dilution:	IHC: 1:100 - 1:500
Reactivity:	Human
Host:	Mouse
Isotype:	IgG1
Clonality:	Monoclonal
Formulation:	This antibody is supplied as cell culture supernatant diluted in tris buffered saline, pH 7.3-7.7, with 1% BSA and <0.1% sodium azide.
Conjugation:	Unconjugated
Storage:	Store at -20°C as received.
Stability:	Stable for 12 months from date of receipt.
Gene Name:	villin 1
Database Link:	<a href="#">NP_009058</a> <a href="#">Entrez Gene 7429 Human</a> <a href="#">P09327</a>
Synonyms:	D2S1471; VIL
Note:	Villin is a 95 kD glycoprotein of microvilli associated with rootlet formation in gastrointestinal mucosal epithelium. Anti-villin labels the brush border area in the gastrointestinal mucosal epithelium. This antibody has been useful in differentiating gastrointestinal adenocarcinoma, neuroendocrine carcinomas, and ovarian adenocarcinomas from adenocarcinomas of other organs. This antibody also labels Merkel cells of the skin.



[View online »](#)

**Product images:**

Immunohistochemistry staining of Paraffin Colon tissue by Villin antibody (dilution: 1:100 - 1:500; visualization of staining: Cytoplasmic, membranous)