

## Product datasheet for **TA327750**

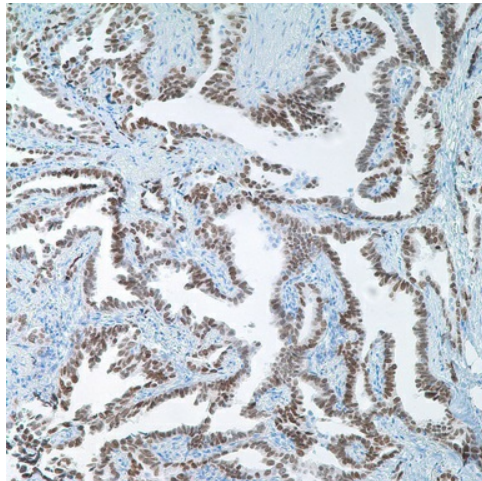
### TTF1 (NKX2-1) Mouse Monoclonal Antibody [Clone ID: 8G7G3/1]

#### Product data:

Product Type:	Primary Antibodies
Clone Name:	8G7G3/1
Applications:	IHC
Recommended Dilution:	IHC: 1:100 - 1:500
Reactivity:	Human
Host:	Mouse
Isotype:	IgG1
Clonality:	Monoclonal
Formulation:	This antibody is supplied as cell culture supernatant diluted in tris buffered saline, pH 7.3-7.7, with 1% BSA and <0.1% sodium azide.
Conjugation:	Unconjugated
Storage:	Store at -20°C as received.
Stability:	Stable for 12 months from date of receipt.
Gene Name:	NK2 homeobox 1
Database Link:	<a href="#">NP_003308</a> <a href="#">Entrez Gene 7080 Human</a> <a href="#">P43699</a>
Synonyms:	BCH; BHC; EBP; NK-2; NKX2.1; NKX2A; NMTC1; T; TEBP; TITF1; TTF-1; TTF1
Note:	Anti-TTF-1 (Thyroid Transcription Factor 1) is useful in differentiating primary adenocarcinoma of the lung from metastatic carcinomas originating in the breast, mediastinal germ cell tumors, and malignant mesothelioma. It can also be used to differentiate small cell lung carcinoma from lymphoid infiltrates. Loss of TTF-1 expression in non-small cell lung carcinoma has been associated with aggressive behavior of such neoplasms. TTF-1 labelling is also seen in thyroid malignancies.
Protein Families:	Druggable Genome, ES Cell Differentiation/IPS, Transcription Factors



[View online »](#)

**Product images:**

Immunohistochemistry staining of Paraffin Lung adenocarcinoma tissue by TTF-1 antibody (dilution: 1:100 - 1:500; visualization of staining: Nuclear)

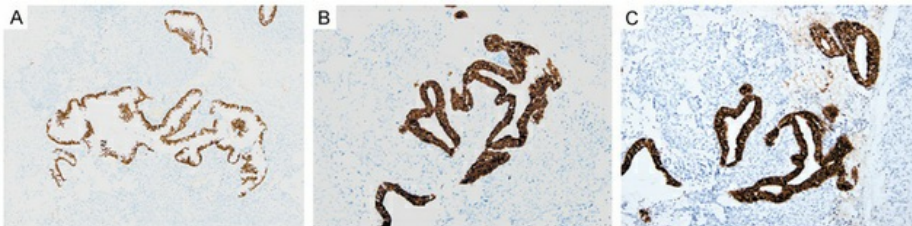


Figure from citation: Immunohistochemistry of NKX2-1 (also known as TTF-1) protein level by using anti-NKX2-1 antibody in human biphasic pulmonary blastoma tissues, A-C: TTF-1, CK (AE1/AE3) and CK18 are positive in epithelial component (DAB, magnification  $\times 200$ ). [View Citation](#)