

Product datasheet for **TA327746**

Thyroglobulin (TG) Mouse Monoclonal Antibody [Clone ID: 2H11+6E1]

Product data:

Product Type:	Primary Antibodies
Clone Name:	2H11+6E1
Applications:	IHC
Recommended Dilution:	IHC: 1:100 - 1:500
Reactivity:	Human
Host:	Mouse
Isotype:	IgG1
Clonality:	Monoclonal
Formulation:	This antibody is supplied as cell culture supernatant diluted in tris buffered saline, pH 7.3-7.7, with 1% BSA and <0.1% sodium azide.
Conjugation:	Unconjugated
Storage:	Store at -20°C as received.
Stability:	Stable for 12 months from date of receipt.
Gene Name:	thyroglobulin
Database Link:	NP_003226 Entrez Gene 7038 Human P01266
Synonyms:	AITD3; TGN



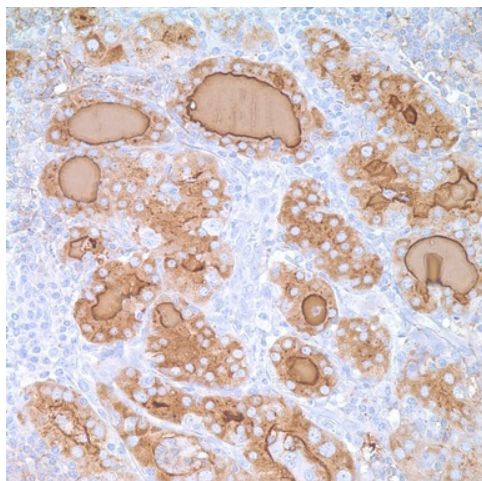
[View online »](#)

Note: Thyroglobulin is the glycoprotein precursor of the iodinated thyroid hormones thyroxine (T4) and triiodothyronine (T3). Thyroglobulin is obtained from the thyroid gland and exhibits the general properties of the globulins. Human thyroglobulin (hTG) is a high molecular weight glycoprotein (605 kDa) found in the thyroid follicular cells. It plays a central role in the uptake, incorporation, and regulated biosynthesis of thyroid hormones. Anti-thyroglobulin reacts with human thyroglobulin as demonstrated by a single band of immunoblotting in a lysate of human thyroid tissue. The vast majority of follicular carcinomas of the thyroid will give positive immunoreactivity for anti-thyroglobulin even though sometimes only focally. Poorly differentiated carcinomas of the thyroid are frequently anti-thyroglobulin negative. Adenocarcinomas of other-than-thyroid origin do not react with this antibody. This antibody is useful in identification of thyroid carcinoma of the papillary and follicular types. Presence of thyroglobulin in metastatic lesions establishes the thyroid origin of tumor. Anti-thyroglobulin, combined with anti-calcitonin, can identify medullary carcinomas of the thyroid. Furthermore, anti-thyroglobulin, combined with anti-TTF1, can be a reliable marker to differentiate between primary thyroid and lung neoplasms.

Protein Families: Druggable Genome

Protein Pathways: Autoimmune thyroid disease

Product images:



Immunohistochemistry staining of Paraffin Thyroid tissue by Thyroglobulin antibody (dilution: 1:100 - 1:500; visualization of staining: Cytoplasmic)