

## Product datasheet for **TA327742**

### **Tcl1 (TCL1A) Mouse Monoclonal Antibody [Clone ID: MRQ-7]**

#### **Product data:**

Product Type:	Primary Antibodies
Clone Name:	MRQ-7
Applications:	IHC
Recommended Dilution:	IHC: 1:100 - 1:500
Reactivity:	Human
Host:	Mouse
Isotype:	IgG
Clonality:	Monoclonal
Formulation:	This antibody is supplied as cell culture supernatant diluted in tris buffered saline, pH 7.3-7.7, with 1% BSA and <0.1% sodium azide.
Conjugation:	Unconjugated
Storage:	Store at -20°C as received.
Stability:	Stable for 12 months from date of receipt.
Gene Name:	T-cell leukemia/lymphoma 1A
Database Link:	<a href="#">NP_068801</a> <a href="#">Entrez Gene 8115 Human</a> <a href="#">P56279</a>
Synonyms:	TCL1

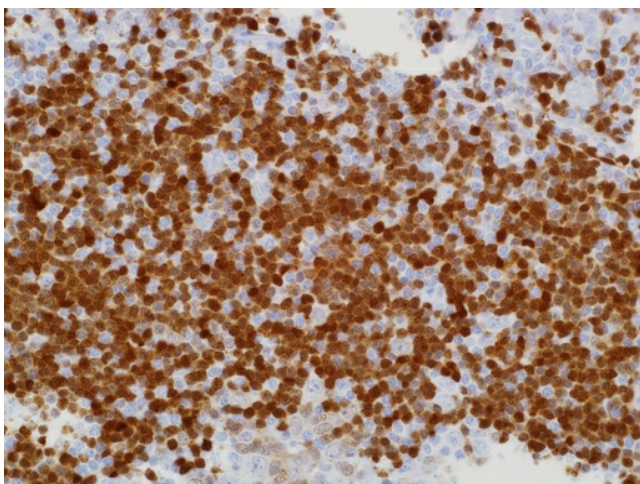


[View online »](#)

**Note:** T-cell leukemia/lymphoma protein 1 (TCL1, TCL1A, p14TCL1) is a 14 kDa product of the TCL1 gene that is involved in T-cell prolymphocytic leukemia (T-PLL). TCL1 protein is normally found in the nucleus and cytoplasm of lymphoid lineage cells during early embryogenesis. Chromosomal translocations may lead to overexpression of TCL1, resulting in T-cell leukemia and B-cell lymphoma. TCL1 binds to a novel site in the pleckstrin homology (PH) domain, resulting in activation and nuclear translocation of Akt by overexpressed TCL1 which may promote an anti-apoptotic response; this may normally serve to promote growth during development but may lead to malignancy when TCL1 is overexpressed. TCL1 is expressed in differentiated B-cells under both reactive and neoplastic conditions, antigen committed B-cells, and in germinal center B-cells. TCL1 is down-regulated in the latest stage of B-cell differentiation. TCL1 is overexpressed in Burkitt lymphoma, the majority of AIDS-related non-Hodgkin lymphoma-designated immunoblastic plasmacytoid lymphoma, lymphoblastic lymphoma, chronic lymphocytic leukemia, mantle cell lymphoma, follicular lymphoma, diffuse large B-cell lymphoma, and primary cutaneous B-cell lymphoma. Therefore, the most useful application of anti-TCL1 is the discrimination of B-cell lymphomas from T-cell lymphomas, CD30+ anaplastic large cell lymphomas, multiple myeloma, and marginal zone B-cell lymphoma.

**Protein Families:** Druggable Genome

### Product images:



Immunohistochemistry staining of Paraffin Tonsil, B-cell lymphoma tissue by TCL1 antibody (dilution: 1:100 - 1:500; visualization of staining: Cytoplasmic, nuclear)