

## Product datasheet for **TA327741**

### **TBX21 Rabbit Monoclonal Antibody [Clone ID: MRQ-46]**

#### **Product data:**

Product Type:	Primary Antibodies
Clone Name:	MRQ-46
Applications:	IHC
Recommended Dilution:	IHC: 1:100 - 1:500
Reactivity:	Human
Host:	Rabbit
Isotype:	IgG1
Clonality:	Monoclonal
Formulation:	This antibody is supplied as cell culture supernatant diluted in tris buffered saline, pH 7.3-7.7, with 1% BSA and <0.1% sodium azide.
Conjugation:	Unconjugated
Storage:	Store at -20°C as received.
Stability:	Stable for 12 months from date of receipt.
Gene Name:	T-box 21
Database Link:	<a href="#">NP_037483</a> <a href="#">Entrez Gene 30009 Human</a> <a href="#">Q9UL17</a>
Synonyms:	T-bet; T-PET; TBET; TBLYM

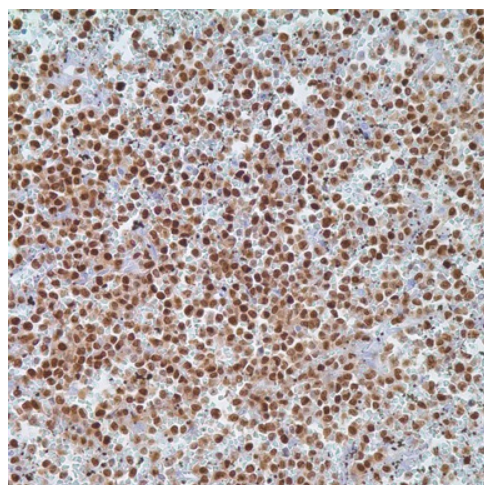


[View online »](#)

**Note:** T-bet, a T-box transcription factor, is expressed in CD4+ T-lymphocytes committed to T-helper (Th)1 T-cell development from naïve T-helper precursor cells (Thp) and redirects Th2 T cells to Th1 development. Anti-T-bet is a marker of mature T-cells and is expressed at very low levels in Th cells and is absent in precursor T-lymphoblastic leukemia/lymphoma cells. Scattered small lymphocytes in the interfollicular T-cell zone of lymphoid tissue, including tonsil, lymph node, and spleen exhibit nuclear staining for T-bet, with no T-bet staining being observed in germinal centers, mantle or marginal zones. T-bet is expressed in a significant subset of B-cell lymphoproliferative disorders, particularly at an early stage of B-cell development (precursor B-cell lymphoblastic leukemia/lymphoblastic lymphoma), and B-cell neoplasms derived from mature B cells, including CLL/SLL, marginal zone lymphoma, and hairy cell leukemia. In contrast, B-cell neoplasms derived from pregerminal center or germinal center B-cells, including mantle cell lymphoma, follicular lymphoma, diffuse large B-cell lymphoma, and Burkitt lymphoma are negative for T-bet. Anti-T-bet is a useful marker for the diagnosis and subtyping of B-cell and T-cell lymphoproliferative disorders. T-bet is not expressed in precursor T-cell lymphoblastic lymphoma/leukemia.

**Protein Families:** Druggable Genome, Transcription Factors

**Product images:**



Immunohistochemistry staining of Paraffin Tonsil tissue by T-bet antibody (dilution: 1:100 - 1:500; visualization of staining: Nuclear)