

Product datasheet for **TA327740**

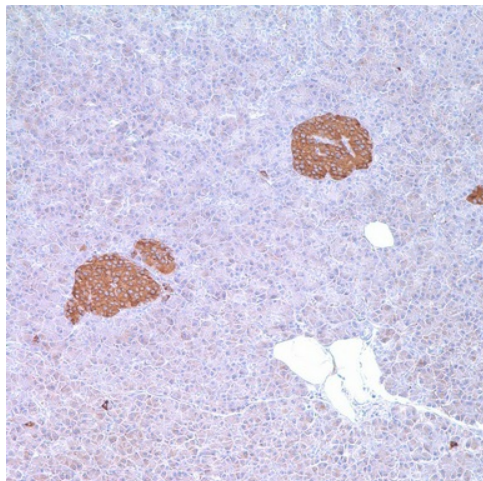
Synaptophysin (SYP) Rabbit Monoclonal Antibody [Clone ID: MRQ-40]

Product data:

Product Type:	Primary Antibodies
Clone Name:	MRQ-40
Applications:	IHC
Recommended Dilution:	IHC:
Reactivity:	Human
Host:	Rabbit
Isotype:	IgG1
Clonality:	Monoclonal
Formulation:	This antibody is supplied as cell culture supernatant diluted in tris buffered saline, pH 7.3-7.7, with 1% BSA and <0.1% sodium azide.
Conjugation:	Unconjugated
Storage:	Store at -20°C as received.
Stability:	Stable for 12 months from date of receipt.
Gene Name:	synaptophysin
Database Link:	NP_003170 Entrez Gene 6855 Human P08247
Synonyms:	MRX96; MRXSYP
Note:	Anti-synaptophysin reacts with neuroendocrine cells of human adrenal medulla, carotid body, skin, pituitary, thyroid, lung, pancreas, and gastrointestinal mucosa. Positive staining is seen in neurons of the brain, spinal cord, retina, Paneth cells in the gastrointestinal tract, and gastric parietal cells. This antibody identifies normal neuroendocrine cells and neuroendocrine neoplasms. Diffuse, finely granular cytoplasmic staining is observed, which probably correlates with the distribution of the antigen within neurosecretory vesicles. The expression of synaptophysin is independent of the presence of NSE or other neuroendocrine markers. Anti-synaptophysin is an independent, broad-range marker of neural and neuroendocrine differentiation.
Protein Families:	Secreted Protein, Transmembrane



[View online »](#)

Product images:

Immunohistochemistry staining of Paraffin Pancreas tissue by Synaptophysin antibody (visualization of staining: Cytoplasmic)