

## Product datasheet for **TA327738**

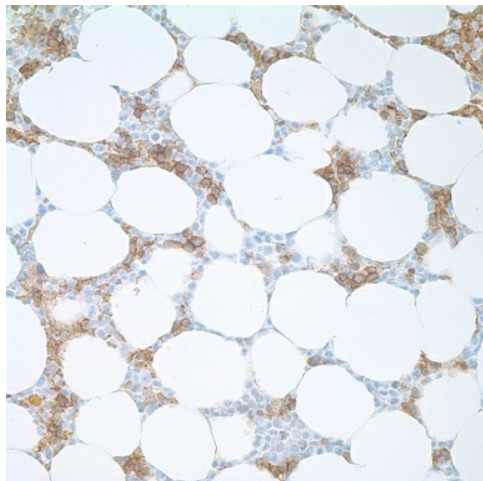
### alpha 1 Spectrin (SPTA1) Mouse Monoclonal Antibody [Clone ID: RBC2/3D5]

#### Product data:

Product Type:	Primary Antibodies
Clone Name:	RBC2/3D5
Applications:	IHC
Recommended Dilution:	IHC: 1:10 - 1:100
Reactivity:	Human
Host:	Mouse
Isotype:	IgG1, kappa
Clonality:	Monoclonal
Formulation:	This antibody is supplied as cell culture supernatant diluted in tris buffered saline, pH 7.3-7.7, with 1% BSA and <0.1% sodium azide.
Conjugation:	Unconjugated
Storage:	Store at -20°C as received.
Stability:	Stable for 12 months from date of receipt.
Gene Name:	spectrin alpha, erythrocytic 1
Database Link:	<a href="#">NP_003117</a> <a href="#">Entrez Gene 6708 Human P02549</a>
Synonyms:	EL2; HPP; HS3; SPH3; SPTA
Note:	Spectrin is an actin-crosslinking and molecular scaffold protein that links the plasma membrane to the actin cytoskeleton and functions in the determination of cell shape, arrangement of transmembrane proteins, and organization of organelles. It is a tetramer made up of alpha-beta dimers linked in a head-to-head arrangement. The gene is one member of a family of alpha- spectrin genes. The encoded protein is primarily composed of 22 spectrin repeats which are involved in dimer formation. It forms weaker tetramer interactions than non-erythrocytic alpha spectrin, which may increase the plasma membrane elasticity and deformability of red blood cells. Mutations in the gene result in a variety of hereditary red blood cell disorders, including elliptocytosis type 2, pyropoikilocytosis, and spherocytic hemolytic anemia. Anti-spectrin is useful in the diagnosis of erythroid leukemias.



[View online »](#)

**Product images:**

Immunohistochemistry staining of Paraffin Bone marrow tissue by Spectrin antibody (dilution: 1:10 - 1:100; visualization of staining: Membranous)