

## Product datasheet for **TA327736**

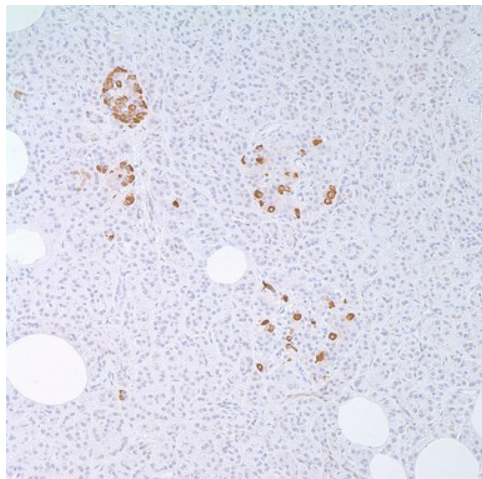
### Somatostatin (SST) Rabbit Polyclonal Antibody

#### Product data:

Product Type:	Primary Antibodies
Applications:	IHC
Recommended Dilution:	IHC: 1:200 - 1:1000
Reactivity:	Human
Host:	Rabbit
Clonality:	Polyclonal
Formulation:	This antibody is supplied as cell culture supernatant diluted in tris buffered saline, pH 7.3-7.7, with 1% BSA and <0.1% sodium azide.
Conjugation:	Unconjugated
Storage:	Store at -20°C as received.
Stability:	Stable for 12 months from date of receipt.
Gene Name:	somatostatin
Database Link:	<a href="#">NP_001039</a> <a href="#">Entrez Gene 6750 Human P61278</a>
Synonyms:	SMST
Note:	Somatostatin (also known as growth hormone inhibiting hormone (GHIH) or somatotropin release-inhibiting factor (SRIF)) is a peptide hormone widely distributed throughout the body and is an important regulator of endocrine and nervous system function. Somatostatin can also be found in gastrointestinal and bronchopulmonary endocrine cells, thymic endocrine cells, and thyroid C-cells. Somatostatin suppresses gastric acid secretion, gallbladder contractions, and pancreatic enzyme secretion. This antibody specifically stains the D-cells of the pancreatic islets of Langerhans and tumors arising from these cells. It recognizes somatostatin-containing cells in pancreatic tumors, islet cell hyperplasia, and islet cells originating in pancreatic ductules.
Protein Families:	Druggable Genome, ES Cell Differentiation/IPS, Secreted Protein



[View online »](#)

**Product images:**

Immunohistochemistry staining of Paraffin Pancreas tissue by Somatostatin antibody (dilution: 1:200 - 1:1000; visualization of staining: Cytoplasmic)