

Product datasheet for **TA327735**

Smoothelin (SMTN) Mouse Monoclonal Antibody [Clone ID: R4A]

Product data:

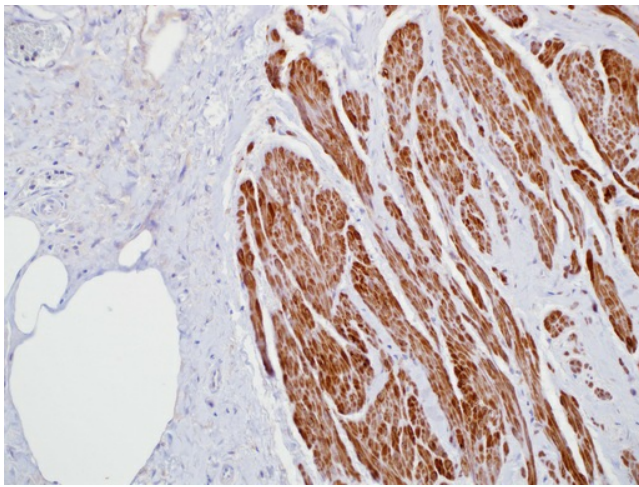
Product Type:	Primary Antibodies
Clone Name:	R4A
Applications:	IHC
Recommended Dilution:	IHC: 1:100 - 1:500
Reactivity:	Human
Host:	Mouse
Isotype:	IgG1
Clonality:	Monoclonal
Formulation:	This antibody is supplied as cell culture supernatant diluted in tris buffered saline, pH 7.3-7.7, with 1% BSA and <0.1% sodium azide.
Conjugation:	Unconjugated
Storage:	Store at -20°C as received.
Stability:	Stable for 12 months from date of receipt.
Gene Name:	smoothelin
Database Link:	NP_001193946 Entrez Gene 6525 Human P53814
Synonyms:	FLJ35168; FLJ35365; FLJ35620; FLJ38597



[View online »](#)

Note: Smoothelin is a constituent of the smooth muscle cell cytoskeleton protein exclusively found in differentiated smooth muscle cells (SMC). Cells with SMC-like characteristics, such as myofibroblasts and myoepithelial cells, as well as skeletal and cardiac muscle do not contain smoothelin. Distinguishing between bladder muscularis mucosae (MM) and muscularis propria (MP) muscle bundles is crucial for accurate staging of bladder carcinoma. Strong smoothelin expression is nearly exclusively observed in muscularis propria. The staining pattern of MP (strongly positive) and MM (negative or weakly positive) makes this technique an attractive diagnostic tool for the sometimes difficult task of staging bladder urothelial carcinoma, such as in transurethral resection specimens of urinary bladder tumors. Differentiating between smooth muscle tumors and other mesenchymal neoplasms of the GI tract can be challenging in small biopsies. Anti-smoothelin immunostaining can be helpful in differentiating benign (+) from malignant smooth muscle tumors (-), and other mimics(-).

Product images:



Immunohistochemistry staining of Paraffin Bladder, leiomyoma tissue by Smoothelin antibody (dilution: 1:100 - 1:500; visualization of staining: Cytoplasmic, nuclear)