

Product datasheet for **TA327734**

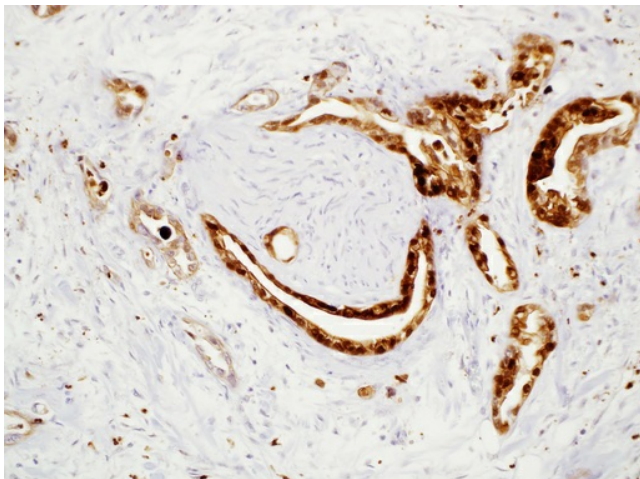
S100P Rabbit Monoclonal Antibody [Clone ID: EP1840Y]

Product data:

Product Type:	Primary Antibodies
Clone Name:	EP1840Y
Applications:	IHC
Recommended Dilution:	IHC: 1:100 - 1:500
Reactivity:	Human
Host:	Rabbit
Isotype:	IgG
Clonality:	Monoclonal
Formulation:	This antibody is supplied as cell culture supernatant diluted in Tris Buffer, pH 7.3-7.7, with 1% BSA and <0.1% Sodium Azide
Conjugation:	Unconjugated
Storage:	Store at -20°C as received.
Stability:	Stable for 12 months from date of receipt.
Gene Name:	S100 calcium binding protein P
Database Link:	NP_005971 Entrez Gene 6286 Human P25815
Synonyms:	MIG9
Note:	S100 Calcium Binding Protein A1 or S100A1 is in a family of proteins which contain 2 EF-hand calcium binding motifs. S100 proteins are expressed in a wide range of cells, and localized in the cytoplasm and/or nucleus. Anti-S100A1 reactivity is seen in normal renal tissue, proximal tubules, loops of Henle, collecting ducts, skeletal muscle, and dendritic cells of lymph nodes of normal tissues. In immunohistochemistry anti-S100A1 is reportedly useful in differentiating renal oncocytoma from chromophobe renal cell carcinoma



[View online »](#)

Product images:

Immunohistochemistry staining of paraffin
Pancreatic ductal adenocarcinoma, urothelial
carcinoma, placenta tissue by S100P antibody
(dilution: 1:100 - 1:500; visualization of staining:
Cytoplasmic, nuclear)