

## Product datasheet for **TA327732**

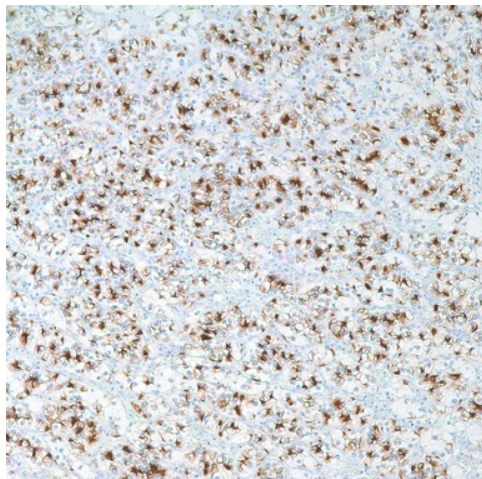
### Papillary renal cell carcinoma (PRCC) Mouse Monoclonal Antibody [Clone ID: PN-15]

#### Product data:

Product Type:	Primary Antibodies
Clone Name:	PN-15
Applications:	IHC
Recommended Dilution:	IHC: 1:50 - 1:200
Reactivity:	Human
Host:	Mouse
Isotype:	IgG1, kappa
Clonality:	Monoclonal
Formulation:	This antibody is supplied as cell culture supernatant diluted in tris buffered saline, pH 7.3-7.7, with 1% BSA and <0.1% sodium azide.
Conjugation:	Unconjugated
Storage:	Store at -20°C as received.
Stability:	Stable for 12 months from date of receipt.
Gene Name:	papillary renal cell carcinoma (translocation-associated)
Database Link:	<a href="#">NP_005964</a> <a href="#">Entrez Gene 5546 Human Q92733</a>
Synonyms:	RCCP1; TPRC
Note:	Anti-renal cell carcinoma (RCC) recognizes a 200 kD glycoprotein localized in the brush border of the proximal renal tubule. This antibody immunoreacts with approximately 90% of primary renal cell carcinomas and approximately 85% of metastatic renal cell carcinomas. Therefore, anti-RCC is a reliable tool for differentiating primary or metastatic renal cell carcinoma from non-renal tumors. It may be utilized as a marker for the differential diagnosis of eosinophilic renal tumors-granular variant of renal cell carcinoma, chromophobe renal cell carcinoma, and oncocytoma. Other tumors that may react with this antibody are parathyroid adenoma and an occasional breast carcinoma. Nephroblastoma, oncocytoma, mesoblastic nephroma, transitional cell carcinoma, and angiomyolipoma are not labeled with this antibody.
Protein Families:	Druggable Genome



[View online »](#)

**Product images:**

Immunohistochemistry staining of Paraffin Renal cell carcinoma tissue by Renal Cell Carcinoma antibody (dilution: 1:50 - 1:200; visualization of staining: Cytoplasmic, membranous)