

## Product datasheet for **TA327731**

### **SPI1 Rabbit Monoclonal Antibody [Clone ID: EPR3158Y]**

#### **Product data:**

Product Type:	Primary Antibodies
Clone Name:	EPR3158Y
Applications:	IHC
Recommended Dilution:	IHC: 1:50 - 1:200
Reactivity:	Human
Host:	Rabbit
Isotype:	IgG
Clonality:	Monoclonal
Formulation:	This antibody is supplied as cell culture supernatant diluted in tris buffered saline, pH 7.3-7.7, with 1% BSA and <0.1% sodium azide.
Conjugation:	Unconjugated
Storage:	Store at -20°C as received.
Stability:	Stable for 12 months from date of receipt.
Gene Name:	Spi-1 proto-oncogene
Database Link:	<a href="#">NP_001074016</a> <a href="#">Entrez Gene 6688 Human P17947</a>
Synonyms:	OF; PU.1; SFPI1; SPI-1; SPI-A



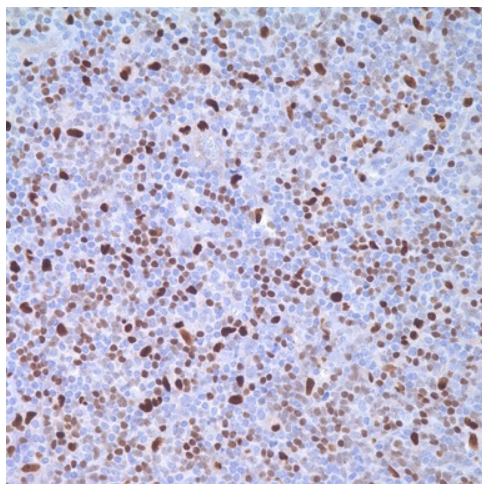
[View online »](#)

**Note:** PU.1 is a transcription factor that has been shown to be important for normal B-cell development. PU.1 belongs to the Ets family of transcription factors. It is expressed in the myeloid lineage and in immature as well as mature B-lymphocytes, with the exception of plasma cells. PU.1 is essential during early B-cell differentiation. The absence of PU.1 results in total block of B-cell development at the pre-pro stage. PU.1 is expressed in germinal center B-cells and mantle B-cells. Various lymphomas are also positive for anti-PU.1 including the following: B-chronic lymphocytic leukemia, mantle cell lymphoma, follicular lymphoma, marginal zone lymphoma, diffuse large cell lymphoma, diffuse large B-cell lymphoma, and nodular lymphocyte predominant Hodgkin lymphoma. Torlakovic et al. have demonstrated a quantitative positive association between a high level of expression of germinal center antigens (including PU.1) and a longer overall survival and progression-free survival in the case of follicular lymphoma.

**Protein Families:** Transcription Factors

**Protein Pathways:** Acute myeloid leukemia, Pathways in cancer

### Product images:



Immunohistochemistry staining of Paraffin Tonsil tissue by PU.1 antibody (dilution: 1:50 - 1:200; visualization of staining: Nuclear)