

## Product datasheet for **TA327730**

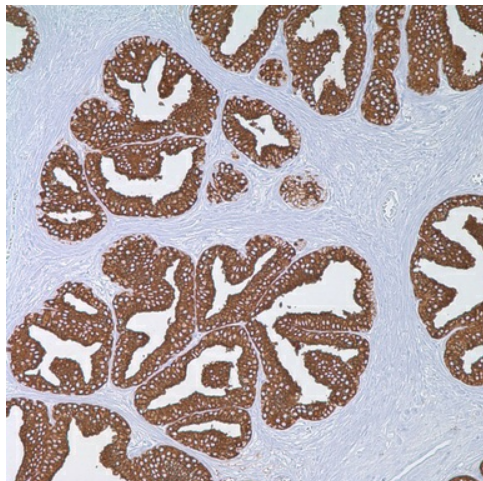
### PSAP Mouse Monoclonal Antibody [Clone ID: PASE/4LJ]

#### Product data:

Product Type:	Primary Antibodies
Clone Name:	PASE/4LJ
Applications:	IHC
Recommended Dilution:	IHC: 1:25 - 1:100
Reactivity:	Human
Host:	Mouse
Isotype:	IgG1
Clonality:	Monoclonal
Formulation:	This antibody is supplied as cell culture supernatant diluted in tris buffered saline, pH 7.3-7.7, with 1% BSA and <0.1% sodium azide.
Conjugation:	Unconjugated
Storage:	Store at -20°C as received.
Stability:	Stable for 12 months from date of receipt.
Gene Name:	prosaposin
Database Link:	<a href="#">NP_001035930</a> <a href="#">Entrez Gene 5660 Human P07602</a>
Synonyms:	GLBA; SAP1
Note:	Anti-PSAP reacts with prostatic acid phosphatase in the glandular epithelium of normal and hyperplastic prostate, carcinoma of the prostate, and metastatic cells of prostatic carcinoma. This marker may be helpful in pinpointing the site of origin in cases of metastatic carcinoma of the prostate, and is considered a more sensitive marker than PSA. However, it also offers less specificity. Nevertheless, PSAP complements PSA in the right clinical context.
Protein Families:	Druggable Genome
Protein Pathways:	Lysosome



[View online »](#)

**Product images:**

Immunohistochemistry staining of Paraffin Prostate tissue by PSAP antibody (dilution: 1:25 - 1:100; visualization of staining: Cytoplasmic)