

## Product datasheet for **TA327729**

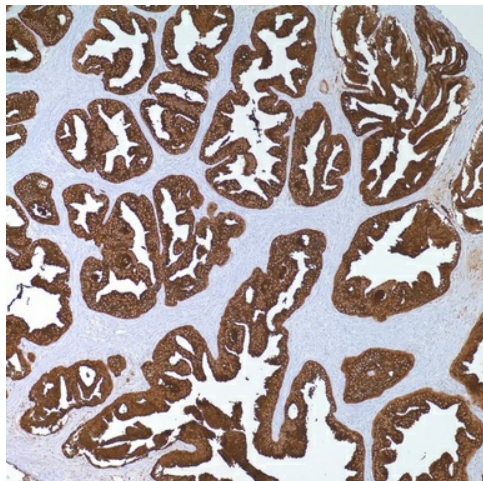
### Prostate Specific Antigen (KLK3) Mouse Monoclonal Antibody [Clone ID: ER-PR8]

#### Product data:

Product Type:	Primary Antibodies
Clone Name:	ER-PR8
Applications:	IHC
Recommended Dilution:	IHC: 1:50 - 1:200
Reactivity:	Human
Host:	Mouse
Isotype:	IgG1, kappa
Clonality:	Monoclonal
Formulation:	This antibody is supplied as cell culture supernatant diluted in tris buffered saline, pH 7.3-7.7, with 1% BSA and <0.1% sodium azide.
Conjugation:	Unconjugated
Storage:	Store at -20°C as received.
Stability:	Stable for 12 months from date of receipt.
Gene Name:	kallikrein related peptidase 3
Database Link:	<a href="#">NP_001639</a> <a href="#">Entrez Gene 354 Human P07288</a>
Synonyms:	APS; hK3; KLK2A1; PSA
Note:	PSA is an antigen present in prostate tissue and in the majority of prostate carcinomas. This antibody recognizes primary and metastatic prostatic neoplasms and rarely tumors of nonprostatic origin. These include breast and a minority of salivary gland tumors. The antigen is a 33-34 kD glycoprotein that is restricted to epithelial cells of the prostate. An immunohistochemical study showed more than 95% of prostatic carcinomas stained with anti-PSA. PSA is demonstrable in the cytoplasm of acinar and ductal cells of benign prostate and prostate adenocarcinoma.
Protein Families:	Druggable Genome, Protease, Secreted Protein
Protein Pathways:	Pathways in cancer, Prostate cancer



[View online »](#)

**Product images:**

Immunohistochemistry staining of Paraffin Prostate tissue by PSA antibody (dilution: 1:50 - 1:200; visualization of staining: Cytoplasmic)