

## Product datasheet for **TA327728**

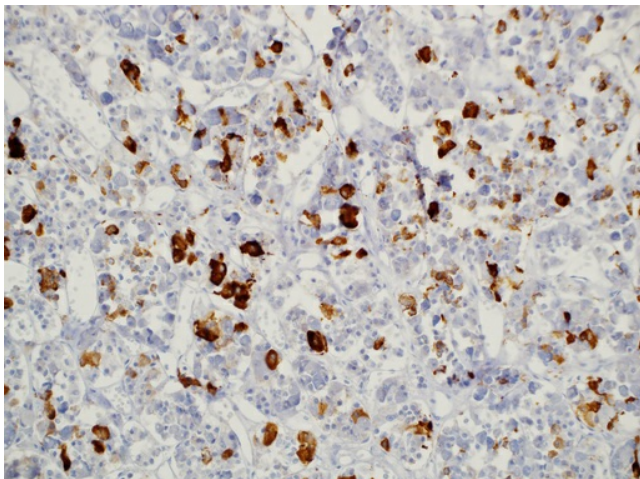
### Prolactin (PRL) Rabbit Polyclonal Antibody

#### Product data:

Product Type:	Primary Antibodies
Applications:	IHC
Recommended Dilution:	IHC: 1:100 - 1:500
Reactivity:	Human
Host:	Rabbit
Clonality:	Polyclonal
Formulation:	This antibody is supplied as cell culture supernatant diluted in tris buffered saline, pH 7.3-7.7, with 1% BSA and <0.1% sodium azide.
Conjugation:	Unconjugated
Storage:	Store at -20°C as received.
Stability:	Stable for 12 months from date of receipt.
Gene Name:	prolactin
Database Link:	<a href="#">NP_000939</a> <a href="#">Entrez Gene 5617 Human P01236</a>
Synonyms:	GHA1
Note:	Prolactin (PRL) is a single-chain polypeptide of 226 amino acids with a molecular weight of about 24 kD. Prolactin plays a role in multiple processes including cell growth, reproduction, and immune function. The pituitary hormone PRL is involved in tumorigenesis in rodents and humans. PRL promotes proliferation, survival, and migration of cancer cells acting via the PRL receptor. Anti-prolactin is a useful marker in classification of pituitary tumors and the study of pituitary disease. It reacts with prolactin-producing cells. Such prolactin-producing cells can also be found in prostate epithelium.
Protein Families:	Druggable Genome, Secreted Protein
Protein Pathways:	Cytokine-cytokine receptor interaction, Jak-STAT signaling pathway, Neuroactive ligand-receptor interaction



[View online »](#)

**Product images:**

Immunohistochemistry staining of Paraffin Pituitary tissue by Prolactin antibody (dilution: 1:100 - 1:500; visualization of staining: Cytoplasmic)