

Product datasheet for **TA327714**

p75 NGF Receptor (NGFR) Mouse Monoclonal Antibody [Clone ID: MRQ-21]

Product data:

Product Type:	Primary Antibodies
Clone Name:	MRQ-21
Applications:	IHC
Recommended Dilution:	IHC: 1:100 - 1:500
Reactivity:	Human
Host:	Mouse
Isotype:	IgG1
Clonality:	Monoclonal
Formulation:	This antibody is supplied as cell culture supernatant diluted in tris buffered saline, pH 7.3-7.7, with 1% BSA and <0.1% sodium azide.
Conjugation:	Unconjugated
Storage:	Store at -20°C as received.
Stability:	Stable for 12 months from date of receipt.
Gene Name:	nerve growth factor receptor
Database Link:	NP_002498 Entrez Gene 4804 Human P08138
Synonyms:	CD271; Gp80-LNGFR; p75(NTR); p75NTR; TNFRSF16



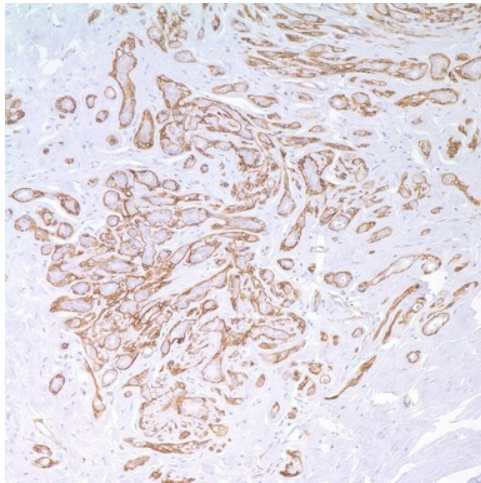
[View online »](#)

Note: NGFR is expressed not only in sympathetic and sensory neurons, but also in various neural crest cell or tumor derivatives such as melanocytes, melanomas, neuroblastomas, pheochromocytomas, neurofibromas, and neurotized nevi (type C melanocytes). Anti-NGFR has been shown to be a reliable marker for desmoplastic and neurotropic melanoma. All reported cases of desmoplastic melanomas are positive with this antibody. This staining property of desmoplastic melanoma cells can be useful in diagnosing challenging cases. It is now apparent that expression of NGFR is ubiquitous and not limited to the nervous system, being expressed in mature nonneural cells such as perivascular cells, dental pulp cells, lymphoidal follicular dendritic cells, basal epithelium of oral mucosa and hair follicles, prostate basal cells, and myoepithelial cells. Anti-NGFR labels the myoepithelial cells of breast ducts and intralobular fibroblasts of breast ducts and thus is an aid in the diagnosis of malignancy in the breast.

Protein Families: Druggable Genome, Transmembrane

Protein Pathways: Cytokine-cytokine receptor interaction, Neurotrophin signaling pathway

Product images:



Immunohistochemistry staining of Paraffin Breast tissue by NGFR antibody (dilution: 1:100 - 1:500; visualization of staining: Cytoplasmic)