

Product datasheet for **TA327713**

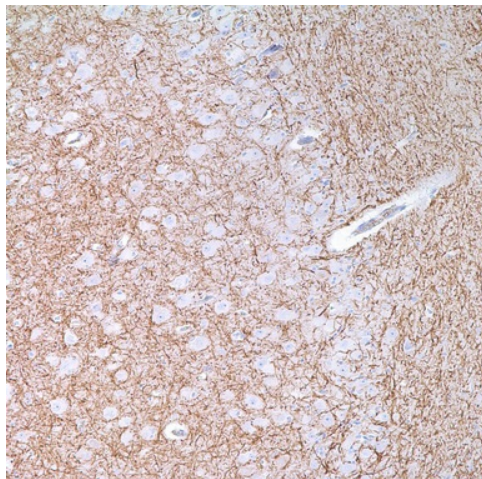
NFH (NEFH) Mouse Monoclonal Antibody [Clone ID: 2F11]

Product data:

Product Type:	Primary Antibodies
Clone Name:	2F11
Applications:	IHC
Recommended Dilution:	IHC: 1:100 - 1:500
Reactivity:	Human
Host:	Mouse
Isotype:	IgG1, kappa
Clonality:	Monoclonal
Formulation:	This antibody is supplied as cell culture supernatant diluted in tris buffered saline, pH 7.3-7.7, with 1% BSA and <0.1% sodium azide.
Conjugation:	Unconjugated
Storage:	Store at -20°C as received.
Stability:	Stable for 12 months from date of receipt.
Gene Name:	neurofilament, heavy polypeptide
Database Link:	NP_066554 Entrez Gene 4744 Human P12036
Synonyms:	NFH
Note:	Anti-neurofilament stains an antigen localized in a number of neural, neuroendocrine, and endocrine tumors. Neuromas, ganglioneuromas, gangliogliomas, ganglioneuroblastomas, and neuroblastomas stain positively for anti-neurofilament. Neurofilaments are also present in paragangliomas as well as adrenal and extra-adrenal pheochromocytomas. Carcinoids, neuroendocrine carcinomas of the skin, and oat cell carcinomas of the lung also express neurofilament.
Protein Families:	Druggable Genome
Protein Pathways:	Amyotrophic lateral sclerosis (ALS)



[View online »](#)

Product images:

Immunohistochemistry staining of Paraffin Brain tissue by Neurofilament antibody (dilution: 1:100 - 1:500; visualization of staining: Cytoplasmic)