

Product datasheet for **TA327711**

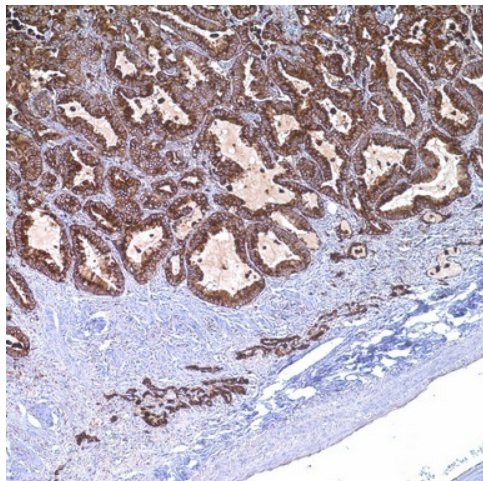
NAPSIN A (NAPSA) Rabbit Polyclonal Antibody

Product data:

Product Type:	Primary Antibodies
Applications:	IHC
Recommended Dilution:	IHC: 1:100 - 1:500
Reactivity:	Human
Host:	Rabbit
Clonality:	Polyclonal
Formulation:	This antibody is supplied as cell culture supernatant diluted in tris buffered saline, pH 7.3-7.7, with 1% BSA and <0.1% sodium azide.
Conjugation:	Unconjugated
Storage:	Store at -20°C as received.
Stability:	Stable for 12 months from date of receipt.
Gene Name:	napsin A aspartic peptidase
Database Link:	NP_004842 Entrez Gene 9476 Human O96009
Synonyms:	KAP; Kdap; NAP1; NAPA; SNAPA
Note:	Napsin is a pepsin-like aspartic proteinase, in the A1 clan of the AA clade of proteinases. There are two closely related napsins, napsin A and napsin B. Napsin A is expressed as a single chain protein with the molecular weight of approximately 38 kDa. Immunohistochemical studies revealed high expression levels of napsin A in human lung and kidney but low expression in spleen. Napsin A is expressed in type II pneumocytes and in adenocarcinomas of lung. The high specificity expression of napsin A in adenocarcinomas of lung is useful to distinguish primary lung adenocarcinomas from adenocarcinomas of other organs.
Protein Families:	Druggable Genome, Protease
Protein Pathways:	Lysosome



[View online »](#)

Product images:

Immunohistochemistry staining of Paraffin Lung adenocarcinoma, kidney tissue by Napsin A antibody (dilution: 1:100 - 1:500; visualization of staining: Cytoplasmic)