

Product datasheet for **TA327709**

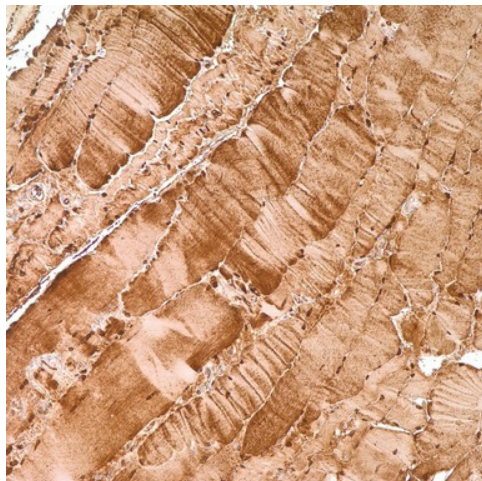
Myoglobin (MB) Rabbit Polyclonal Antibody

Product data:

Product Type:	Primary Antibodies
Applications:	IHC
Recommended Dilution:	IHC: 1:50 - 1:200
Reactivity:	Human
Host:	Rabbit
Clonality:	Polyclonal
Formulation:	This antibody is supplied as cell culture supernatant diluted in tris buffered saline, pH 7.3-7.7, with 1% BSA and <0.1% sodium azide.
Conjugation:	Unconjugated
Storage:	Store at -20°C as received.
Stability:	Stable for 12 months from date of receipt.
Gene Name:	myoglobin
Database Link:	NP_005359 Entrez Gene 4151 Human P02144
Synonyms:	myoglobgin; PVALB
Note:	Immunostaining with anti-myoglobin provides a specific, sensitive, and practical procedure for the identification of tumors of muscle origin. Since myoglobin is found exclusively in skeletal and cardiac muscle and is not present in any other cells of the human body, it may be used to distinguish rhabdomyosarcoma from other soft tissue tumors. Anti-myoglobin staining is also useful when demonstrating rhabdomyoblastic differentiation in other tumors, e.g. neurogenic sarcomas and malignant mixed mesodermal tumors of the uterus and ovary.



[View online »](#)

Product images:

Immunohistochemistry staining of Paraffin Skeletal muscle tissue by Myoglobin antibody (dilution: 1:50 - 1:200; visualization of staining: Cytoplasmic)