

Product datasheet for **TA327706**

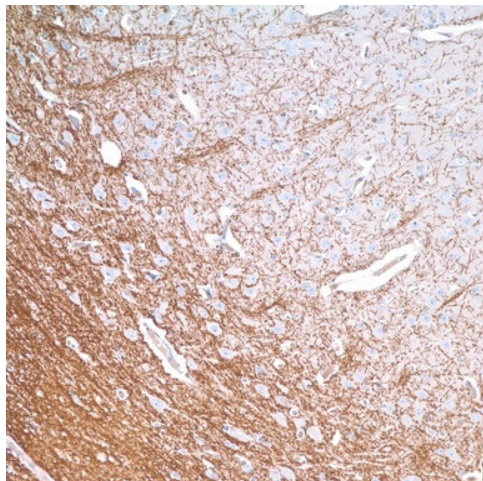
Mbp Rabbit Polyclonal Antibody

Product data:

Product Type:	Primary Antibodies
Applications:	IHC
Recommended Dilution:	IHC: 1:50 - 1:200
Reactivity:	Human
Host:	Rabbit
Clonality:	Polyclonal
Formulation:	This antibody is supplied as cell culture supernatant diluted in tris buffered saline, pH 7.3-7.7, with 1% BSA and <0.1% sodium azide.
Conjugation:	Unconjugated
Storage:	Store at -20°C as received.
Stability:	Stable for 12 months from date of receipt.
Gene Name:	myelin basic protein
Database Link:	NP_001020416 Entrez Gene 4155 Human P04370
Synonyms:	Golli-mbp; MGC99675; OTTHUMP00000174383
Note:	Myelin basic protein (MBP) is a protein believed to be important in the process of myelination of nerves in the central nervous system (CNS). MBP is present in the central and peripheral nervous system. The pool of MBP in the central nervous system is very diverse, with several splice variants being expressed and a large number of post-translational modifications on the protein, which include phosphorylation, methylation, deamidation and citrullination. MBP has been demonstrated in neuromas, neurofibromas, and neurogenic sarcomas; other spindle cell neoplasms do not stain with this antibody. Immunoreactivity for anti-MBP in granular cell tumors strengthens the concept of a Schwann cell derivation of these lesions. Unlike other nervous system proteins, e.g. GFAP and S-100, MBP has not been demonstrated in melanocytes or tumors derived from them.



[View online »](#)

Product images:

Immunohistochemistry staining of Paraffin Brain tissue by Myelin Basic Protein antibody (dilution: 1:50 - 1:200; visualization of staining: Cytoplasmic)