

Product datasheet for **TA327702**

EMA (MUC1) Mouse Monoclonal Antibody [Clone ID: MRQ-17]

Product data:

Product Type:	Primary Antibodies
Clone Name:	MRQ-17
Applications:	IHC
Recommended Dilution:	IHC: 1:50 - 1:200
Reactivity:	Human
Host:	Mouse
Isotype:	IgG1
Clonality:	Monoclonal
Formulation:	This antibody is supplied as cell culture supernatant diluted in tris buffered saline, pH 7.3-7.7, with 1% BSA and <0.1% sodium azide.
Conjugation:	Unconjugated
Storage:	Store at -20°C as received.
Stability:	Stable for 12 months from date of receipt.
Gene Name:	mucin 1, cell surface associated
Database Link:	NP_002447 Entrez Gene 4582 Human P15941
Synonyms:	ADMCKD; ADMCKD1; CA 15-3; CD227; EMA; H23AG; KL-6; MAM6; MCD; MCKD; MCKD1; MUC-1; SEC

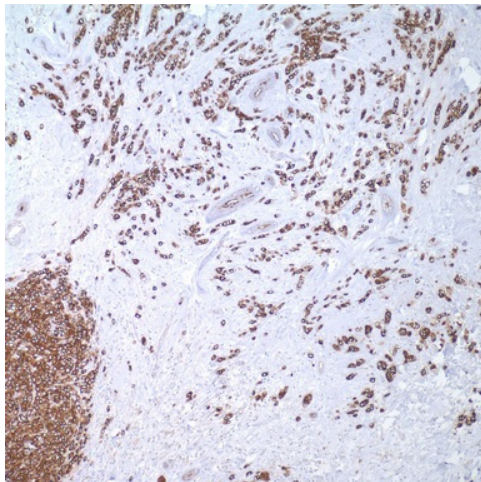


[View online »](#)

Note: Mucins are high molecular weight glycoproteins which constitute the major component of the mucus layer that protects the gastric epithelium. The heterogeneous pattern of mucin expression, including the expression of the intestinal mucin MUC2, may provide new insights into the differentiation pathways of gastric carcinoma. Pinto-de-Sousa et al. have shown, in a comprehensive study of gastric carcinomas evaluated for expression of several mucins (MUC1, MUC2, MUC5AC, and MUC6), that: (1) mucin expression is associated with tumor type (MUC5AC with diffuse and infiltrative carcinomas and MUC2 with mucinous carcinomas) but not with the clinico-biological behavior of the tumors; and (2) mucin expression is associated with tumor location (MUC5AC with antrum carcinomas and MUC2 with cardia carcinomas), indirectly reflecting differences in tumor differentiation according to tumor location. The following generalities apply to the patterns of MUC1 expression: Apical surfaces of most epithelial cells in breast, GI, respiratory, and GU tracts.

Protein Families: Druggable Genome, Secreted Protein, Transmembrane

Product images:



Immunohistochemistry staining of Paraffin Breast tissue by MUC 1 antibody (dilution: 1:50 - 1:200; visualization of staining: Cytoplasmic)