

Product datasheet for **TA327698**

Mammaglobin A (SCGB2A2) Rabbit Monoclonal Antibody [Clone ID: 31A5]

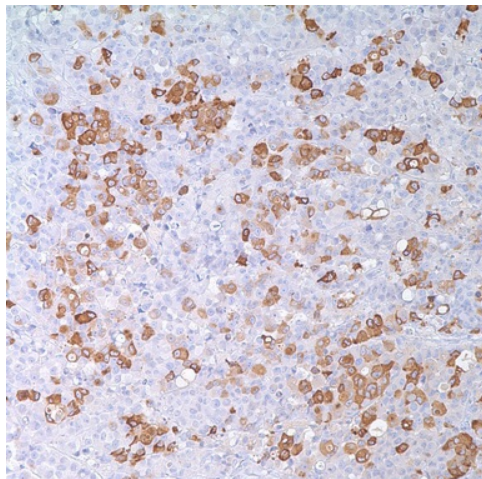
Product data:

Product Type:	Primary Antibodies
Clone Name:	31A5
Applications:	IHC
Recommended Dilution:	IHC: 1:100-1:500
Reactivity:	Human
Host:	Rabbit
Isotype:	IgG
Clonality:	Monoclonal
Formulation:	This antibody is supplied as cell culture supernatant diluted in tris buffered saline, pH 7.3-7.7, with 1% BSA and <0.1% sodium azide.
Conjugation:	Unconjugated
Storage:	Store at -20°C as received.
Stability:	Stable for 12 months from date of receipt.
Gene Name:	secretoglobin family 2A member 2
Database Link:	NP_002402 Entrez Gene 4250 Human Q13296
Synonyms:	MGB1; UGB2
Note:	Mammaglobin is a 10 kDa glycoprotein with unknown function identified in a substantial proportion of primary and metastatic breast carcinomas. Mammaglobin mRNA is present in high levels in human breast cancer cell lines and primary breast cancers. High levels of mRNA have been detected in normal human sweat glands as well, and anti-mammaglobin may label sweat gland tumors. Anti-mammaglobin has been shown to be effective in detecting up to 85% of breast carcinomas via immunohistochemistry on paraffin-embedded tissues. Anti-mammaglobin is higher in sensitivity and lower in specificity for primary and metastatic breast carcinoma, in comparison to anti-GCDFP-15.



[View online »](#)

Product images:



Immunohistochemistry staining of Paraffin Breast carcinoma tissue by Mammaglobin antibody (dilution: 1:100-1:500; visualization of staining: Cytoplasmic)