

## Product datasheet for **TA327697**

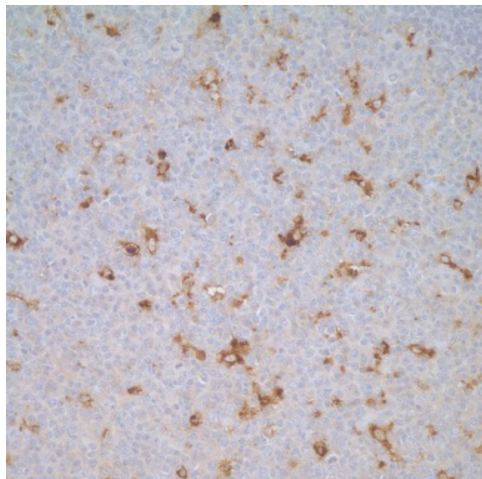
### Lysozyme (LYZ) Rabbit Polyclonal Antibody

#### Product data:

|                       |   |
|-----------------------|---|
| Product Type:         | Primary Antibodies  |
| Applications:         | IHC   |
| Recommended Dilution: | IHC: 1:100-1:500  |
| Reactivity:           | Human   |
| Host:                 | Rabbit  |
| Clonality:            | Polyclonal  |
| Formulation:          | This antibody is supplied as cell culture supernatant diluted in tris buffered saline, pH 7.3-7.7, with 1% BSA and <0.1% sodium azide.  |
| Conjugation:          | Unconjugated  |
| Storage:              | Store at -20°C as received.   |
| Stability:            | Stable for 12 months from date of receipt.  |
| Gene Name:            | lysozyme  |
| Database Link:        | <a href="#">NP_000230</a><br><a href="#">Entrez Gene 4069 Human P61626</a>  |
| Synonyms:             | LYZF1; LZM  |
| Note:                 | Anti-lysozyme stains myeloid cells, histiocytes, granulocytes, macrophages, and monocytes. It is an important marker that may demonstrate the myeloid or monocytic nature of acute leukemia. The restrictive nature of anti-lysozyme staining suggests that lysozyme may be synthesized predominantly in reactive histiocytes rather than in resting, unstimulated phagocytes. Anti-lysozyme may aid in the identification of histiocytic neoplasias, large lymphocytes, and classifying lymphoproliferative disorders. |
| Protein Families:     | Druggable Genome  |



[View online »](#)

**Product images:**

Immunohistochemistry staining of Paraffin Tonsil tissue by Lysozyme antibody (dilution: 1:100-1:500; visualization of staining: Cytoplasmic)