

Product datasheet for **TA327696**

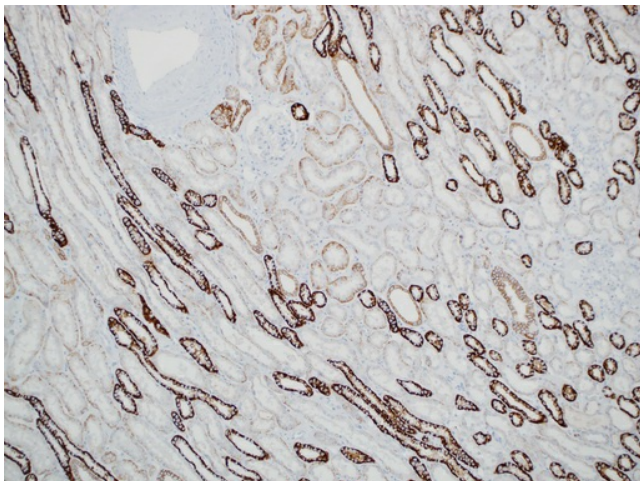
Cadherin 16 (CDH16) Mouse Monoclonal Antibody [Clone ID: MRQ-33]

Product data:

Product Type:	Primary Antibodies
Clone Name:	MRQ-33
Applications:	IHC
Recommended Dilution:	IHC: 1:100 - 1:500
Reactivity:	Human
Host:	Mouse
Isotype:	IgG1
Clonality:	Monoclonal
Formulation:	This antibody is supplied as cell culture supernatant diluted in tris buffered saline, pH 7.3-7.7, with 1% BSA and <0.1% sodium azide.
Conjugation:	Unconjugated
Storage:	Store at -20°C as received.
Stability:	Stable for 12 months from date of receipt.
Gene Name:	cadherin 16
Database Link:	NP_001191673 Entrez Gene 1014 Human O75309
Synonyms:	KSP-cadherin
Note:	Kidney-specific cadherin (Ksp-cadherin or cadherin-16) is a kidney-specific member of the cadherin family of cell adhesion molecules. Within the kidney, Ksp-cadherin is found exclusively in the basolateral membrane of renal tubular epithelial cells and collecting duct cells, and not in glomeruli, renal interstitial cells, or blood vessels. Recent studies have shown that anti- Ksp-cadherin can be used to distinguish chromophobe renal cell carcinoma from oncocytoma with a membranous staining pattern in 96% of chromophobe carcinomas, but in only 6% of oncocytomas. However, other studies report anti-Ksp-cadherin positivity in 100% of chromophobe RCCs, and 95% of oncocytomas.
Protein Families:	Transmembrane



[View online »](#)

Product images:

Immunohistochemistry staining of Paraffin
Kidney tissue by ksp- Cadherin antibody (dilution:
1:100 - 1:500; visualization of staining:
Membranous, cytoplasmic)