

Product datasheet for **TA327693**

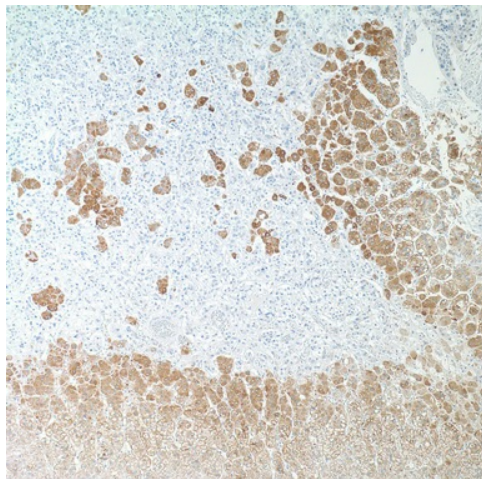
Inhibin alpha (INHA) Mouse Monoclonal Antibody [Clone ID: R1]

Product data:

Product Type:	Primary Antibodies
Clone Name:	R1
Applications:	IHC
Recommended Dilution:	IHC: 1:5 - 1:100
Reactivity:	Human
Host:	Mouse
Isotype:	IgG2a
Clonality:	Monoclonal
Formulation:	This antibody is supplied as cell culture supernatant diluted in tris buffered saline, pH 7.3-7.7, with 1% BSA and <0.1% sodium azide.
Conjugation:	Unconjugated
Storage:	Store at -20°C as received.
Stability:	Stable for 12 months from date of receipt.
Gene Name:	inhibin alpha subunit
Database Link:	NP_002182 Entrez Gene 3623 Human P05111
Synonyms:	A-inhibin subunit; alpha; inhibin; inhibin alpha subunit
Note:	Anti-inhibin alpha is an antibody against a peptide hormone which has demonstrated utility in the differentiation between adrenal cortical tumors and renal cell carcinoma. Sex cord stromal tumors of the ovary as well as trophoblastic tumors also demonstrate cytoplasmic positivity with this antibody. This antibody has been used to make the differential diagnosis of intra- uterine vs. ectopic pregnancy in endometrial curettings.
Protein Families:	Druggable Genome, Secreted Protein



[View online »](#)

Product images:

Immunohistochemistry staining of Paraffin Adrenal cortex tissue by Inhibin, alpha antibody (dilution: 1:5 - 1:100; visualization of staining: Cytoplasmic)