

Product datasheet for **TA327692**

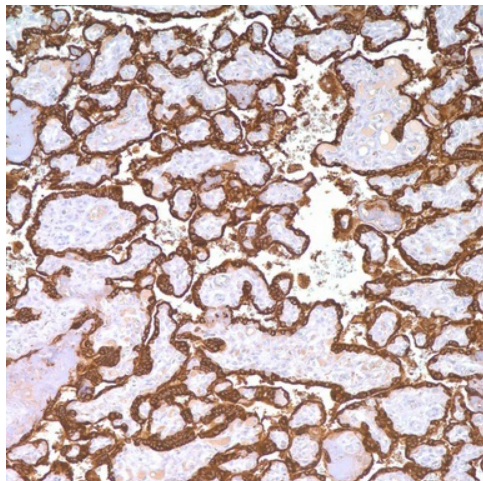
Placental lactogen (CSH1) Rabbit Polyclonal Antibody

Product data:

Product Type:	Primary Antibodies
Applications:	IHC
Recommended Dilution:	IHC: 1:50 - 1:200
Reactivity:	Human
Host:	Rabbit
Clonality:	Polyclonal
Formulation:	This antibody is supplied as cell culture supernatant diluted in tris buffered saline, pH 7.3-7.7, with 1% BSA and <0.1% sodium azide.
Conjugation:	Unconjugated
Storage:	Store at -20°C as received.
Stability:	Stable for 12 months from date of receipt.
Gene Name:	chorionic somatomammotropin hormone 1
Database Link:	NP_001308 Entrez Gene 1442 Human PODML2
Synonyms:	CS-1; CSA; CSMT; hCS-1; hCS-A; PL
Note:	Human placental lactogen (hPL), also previously known as 'human chorionic somatomammotropin', is a 22 kD protein with partial homology to growth hormone. hPL is first detectable in the maternal serum in the fifth week of gestation and reaches a plateau by the thirty-fourth week. hPL has been demonstrated by immunochemistry in the syncytiotrophoblastic cells of choriocarcinoma. A rare variant of trophoblastic tumor has been reported in the testis with resemblance to uterine placental Visualization Cytoplasmic site trophoblastic tumor. It consists purely of intermediate trophoblasts which are diffusely positive for hPL and focally for β -hCG.
Protein Families:	Druggable Genome
Protein Pathways:	Jak-STAT signaling pathway, Neuroactive ligand-receptor interaction



[View online »](#)

Product images:

Immunohistochemistry staining of Paraffin Placenta tissue by hPL antibody (dilution: 1:50 - 1:200; visualization of staining: Cytoplasmic)