

## Product datasheet for **TA327690**

### **HBA1 Rabbit Monoclonal Antibody [Clone ID: EPR3608]**

#### **Product data:**

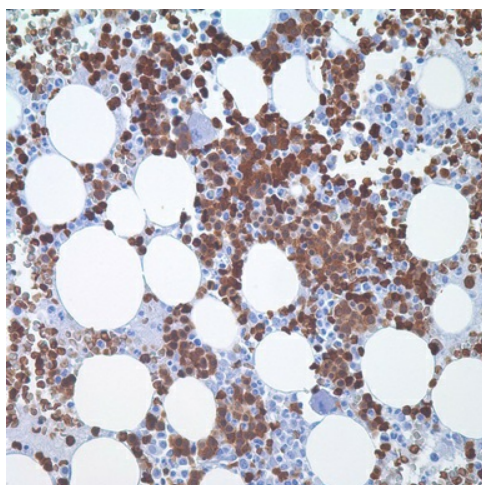
Product Type:	Primary Antibodies
Clone Name:	EPR3608
Applications:	IHC
Recommended Dilution:	IHC: 1:100 - 1:500
Reactivity:	Human
Host:	Rabbit
Isotype:	IgG
Clonality:	Monoclonal
Formulation:	This antibody is supplied as cell culture supernatant diluted in tris buffered saline, pH 7.3-7.7, with 1% BSA and <0.1% sodium azide.
Conjugation:	Unconjugated
Storage:	Store at -20°C as received.
Stability:	Stable for 12 months from date of receipt.
Gene Name:	hemoglobin subunit alpha 1
Database Link:	<a href="#">NP_000549</a> <a href="#">Entrez Gene 3039 Human</a> <a href="#">P69905</a>
Synonyms:	HBA-T3; HBH



[View online »](#)

**Note:** Hemoglobin alpha chain belongs to the globin family and is involved in oxygen transport from the lung to the various peripheral tissues. Hemoglobin A is comprised of two alpha chains and two beta chains, whereas hemoglobin A2 is comprised of two alpha chains and two delta chains. Immunohistochemical localization of hemoglobin is excellent as an erythroid marker for the detection of immature, dysplastic, and megaloblastic erythroid cells in myeloproliferative disorders, such as erythroleukemia. In contrast, myeloid cells, lymphoid cells, plasma cells, histiocytes, and megakaryocytes stain negative with anti-hemoglobin A. Anti-hemoglobin A, combined with antibodies against CD34, CD117, CD68, and MPO can be helpful in distinguishing between reactive extramedullary hematopoiesis and that seen in neoplastic myeloid disorders in spleen. Anti-hemoglobin A is limited to expression by erythroid precursors in bone marrow and is therefore of assistance in calculating percentages of erythroid precursors.

**Product images:**



Immunohistochemistry staining of Paraffin Bone Marrow, placenta tissue by Hemoglobin A antibody (dilution: 1:100 - 1:500; visualization of staining: Cytoplasmic)