

Product datasheet for **TA327689**

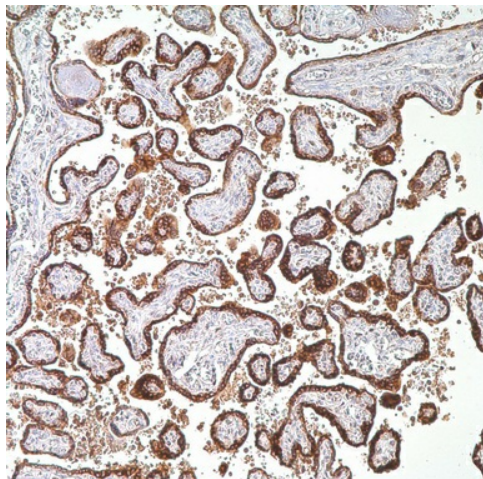
hCG beta (CGB3) Rabbit Polyclonal Antibody

Product data:

Product Type:	Primary Antibodies
Applications:	IHC
Recommended Dilution:	IHC: 1:50 - 1:250
Reactivity:	Human
Host:	Rabbit
Clonality:	Polyclonal
Formulation:	This antibody is supplied as cell culture supernatant diluted in tris buffered saline, pH 7.3-7.7, with 1% BSA and <0.1% sodium azide.
Conjugation:	Unconjugated
Storage:	Store at -20°C as received.
Stability:	Stable for 12 months from date of receipt.
Gene Name:	chorionic gonadotropin beta subunit 3
Database Link:	NP_000728 Entrez Gene 1082 Human PODN86
Synonyms:	CGB3; CGB5; CGB7; CGB8; hCGB
Note:	hCG is a protein secreted in large quantities by normal trophoblasts; the antibody detects cells and tumors of trophoblastic origin such as choriocarcinoma. Large cell carcinoma and adenocarcinoma of the lung demonstrate anti-hCG positivity in 90% and 60% of cases respectively. 20% of lung squamous cell carcinomas are positive for anti-hCG. hCG expression by non-trophoblastic tumors may indicate aggressive behavior since it has been observed that hCG may play a role in the host response to a given tumor.
Protein Families:	Druggable Genome



[View online »](#)

Product images:

Immunohistochemistry staining of Paraffin Placenta tissue by hCG antibody (dilution: 1:50 - 1:250; visualization of staining: Cytoplasmic)