

Product datasheet for **TA327685**

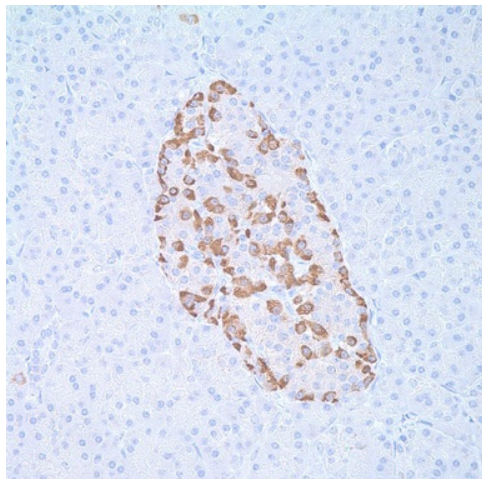
GLP1 (GCG) Rabbit Polyclonal Antibody

Product data:

Product Type:	Primary Antibodies
Applications:	IHC
Recommended Dilution:	IHC: 1:100 - 1:500
Reactivity:	Human
Host:	Rabbit
Clonality:	Polyclonal
Formulation:	This antibody is supplied as cell culture supernatant diluted in tris buffered saline, pH 7.3-7.7, with 1% BSA and <0.1% sodium azide.
Conjugation:	Unconjugated
Storage:	Store at -20°C as received.
Stability:	Stable for 12 months from date of receipt.
Gene Name:	glucagon
Database Link:	NP_002045 Entrez Gene 2641 Human P01275
Synonyms:	GLP1; GLP2; GRPP
Note:	Anti-glucagon detects glucagon-secreting cells and tumors such as glucagonomas. Studies show that approximately 80% of glucagonomas are malignant and these patients have a syndrome often initially recognized by dermatologists. Symptoms include necrolytic migratory erythema as well as diabetes, anemia, stomatitis, weight loss, frequent venous thromboses, and in some instances, diarrhea and psychiatric disturbances. The diagnosis may be readily confirmed by the demonstration of elevated plasma glucagon concentration.
Protein Families:	Druggable Genome, ES Cell Differentiation/IPS, Secreted Protein



[View online »](#)

Product images:

Immunohistochemistry staining of Paraffin Pancreas tissue by Glucagon antibody (dilution: 1:100 - 1:500; visualization of staining: Cytoplasmic)