

Product datasheet for **TA327682**

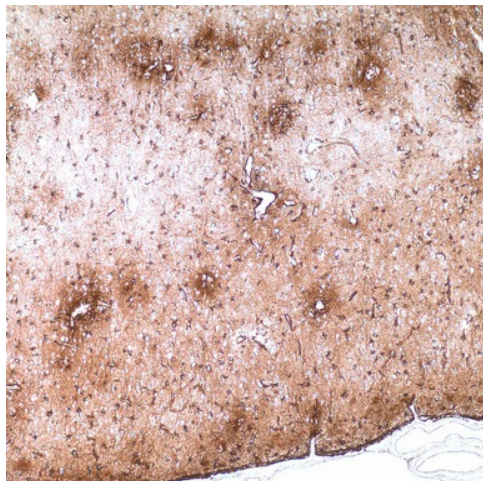
GFAP Rabbit Monoclonal Antibody [Clone ID: EP672Y]

Product data:

Product Type:	Primary Antibodies
Clone Name:	EP672Y
Applications:	IHC
Recommended Dilution:	IHC: 1:25 - 1:100
Reactivity:	Human
Host:	Rabbit
Isotype:	IgG
Clonality:	Monoclonal
Formulation:	This antibody is supplied as cell culture supernatant diluted in tris buffered saline, pH 7.3-7.7, with 1% BSA and <0.1% sodium azide.
Conjugation:	Unconjugated
Storage:	Store at -20°C as received.
Stability:	Stable for 12 months from date of receipt.
Gene Name:	glial fibrillary acidic protein
Database Link:	NP_002046 Entrez Gene 2670 Human P14136
Synonyms:	ALXDRD
Note:	Anti-GFAP antibody detects astrocytes, Schwann cells, satellite cells, enteric glial cells, and some groups of ependymal cells. This marker is mainly used to distinguish neoplasms of astrocytic origin from other neoplasms in the central nervous system.
Protein Families:	ES Cell Differentiation/IPS



[View online »](#)

Product images:

Immunohistochemistry staining of Paraffin Brain tissue by GFAP antibody (dilution: 1:25 - 1:100; visualization of staining: Cytoplasmic)