

## Product datasheet for **TA327681**

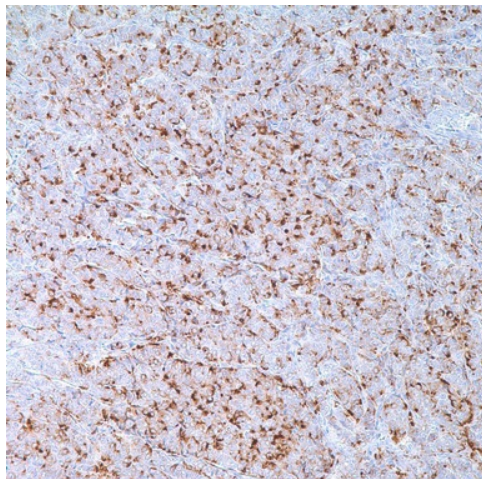
### GCDFP 15 (PIP) Rabbit Monoclonal Antibody [Clone ID: EP1582Y]

#### Product data:

Product Type:	Primary Antibodies
Clone Name:	EP1582Y
Applications:	IHC
Recommended Dilution:	IHC: 1:100 - 1:500
Reactivity:	Human
Host:	Rabbit
Isotype:	IgG
Clonality:	Monoclonal
Formulation:	This antibody is supplied as cell culture supernatant diluted in tris buffered saline, pH 7.3-7.7, with 1% BSA and <0.1% sodium azide.
Conjugation:	Unconjugated
Storage:	Store at -20°C as received.
Stability:	Stable for 12 months from date of receipt.
Gene Name:	prolactin induced protein
Database Link:	<a href="#">NP_002643</a> <a href="#">Entrez Gene 5304 Human P12273</a>
Synonyms:	GCDFP-15; GCDFP15; GPIP4
Note:	GCDFP-15 is a 15 kD glycoprotein which is localized in the apocrine metaplastic epithelium lining breast cysts and in apocrine glands in the axilla, vulva, eyelid, and ear canal. Approximately 70% of breast carcinomas stain positive with antibody to GCDFP-15. Anti-GCDFP-15 is the most specific marker for breast carcinoma. Colorectal carcinomas, lung carcinoma, and mesotheliomas usually do not stain with this antibody. Lung adenocarcinoma rarely stains with this antibody.
Protein Families:	Secreted Protein



[View online »](#)

**Product images:**

Immunohistochemistry staining of Paraffin Breast, breast carcinoma tissue by GCDFP-15 antibody (dilution: 1:100 - 1:500; visualization of staining: Cytoplasmic)