

## Product datasheet for **TA327679**

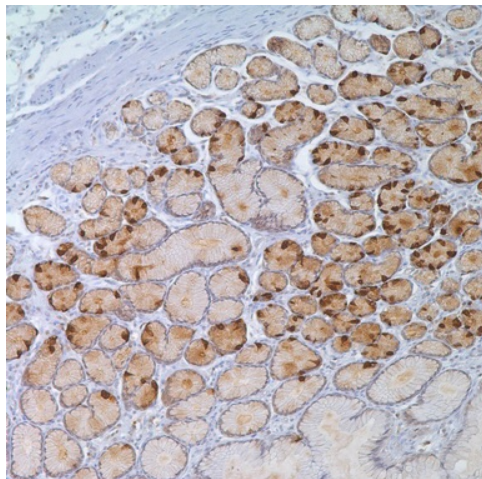
### Gastrin (GAST) Rabbit Polyclonal Antibody

#### Product data:

Product Type:	Primary Antibodies
Applications:	IHC
Recommended Dilution:	IHC: 1:100 - 1:500
Reactivity:	Human
Host:	Rabbit
Clonality:	Polyclonal
Formulation:	This antibody is supplied as cell culture supernatant diluted in tris buffered saline, pH 7.3-7.7, with 1% BSA and <0.1% sodium azide.
Conjugation:	Unconjugated
Storage:	Store at -20°C as received.
Stability:	Stable for 12 months from date of receipt.
Gene Name:	gastrin
Database Link:	<a href="#">NP_000796</a> <a href="#">Entrez Gene 2520 Human P01350</a>
Synonyms:	GAS
Note:	Gastrin is a hormone whose main function is to stimulate secretion of hydrochloric acid by the gastric mucosa, which results in gastrin formation inhibition. This hormone also acts as a mitogenic factor for gastrointestinal epithelial cells. Gastrin has two biologically active peptide forms: G34 and G17. They activate two different receptors: the CCK-1 receptor, which has low affinity for gastrin but high affinity for the related hormone cholecystokinin (CCK), and the CCK-2 receptor, which has high affinity for both gastrin and CCK and mediates the acid-secretory as well as the proliferative effects of gastrin. More recently, gastrin has been suggested to induce leukocyte-endothelial cell interactions and to have a pro-inflammatory effect. Anti-gastrin stains G-cells of human antral/pyloric mucosa and cells producing gastrin or a structural gastrin analog as is seen in stomach; no staining of other cells or tissue types has been observed. This antibody may react with sulfated and non-sulfated forms of gastrin.
Protein Families:	Druggable Genome, Secreted Protein



[View online »](#)

**Product images:**

Immunohistochemistry staining of Paraffin Stomach tissue by Gastrin antibody (dilution: 1:100 - 1:500; visualization of staining: Cytoplasmic)