

Product datasheet for **TA327677**

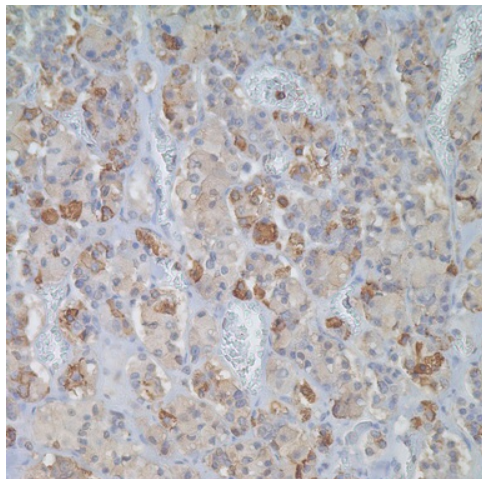
FSH beta (FSHB) Rabbit Polyclonal Antibody

Product data:

Product Type:	Primary Antibodies
Applications:	IHC
Recommended Dilution:	IHC: 1:25 - 1:100
Reactivity:	Human
Host:	Rabbit
Clonality:	Polyclonal
Formulation:	This antibody is supplied as cell culture supernatant diluted in tris buffered saline, pH 7.3-7.7, with 1% BSA and <0.1% sodium azide.
Conjugation:	Unconjugated
Storage:	Store at -20°C as received.
Stability:	Stable for 12 months from date of receipt.
Gene Name:	follicle stimulating hormone beta subunit
Database Link:	NP_001018090 Entrez Gene 2488 Human P01225
Synonyms:	HH24
Note:	Follicle-stimulating hormone (FSH) is a member of the pituitary glycoprotein hormone family which includes luteinizing hormone, chorionic gonadotropin, and thyroid-stimulating hormone. Follicle-stimulating hormone enables ovarian folliculogenesis to the antral follicle stage and is essential for Sertoli cell proliferation and maintenance of sperm quality in the testis. Members of the pituitary glycoprotein hormone family consist of a shared alpha chain and a beta chain encoded by a separate gene. The FSHB gene encodes the beta subunit of follicle stimulating hormone. Anti-FSH is a useful marker in classification of pituitary tumors and the study of pituitary disease. It reacts with FSH-producing cells (gonadotrophs).
Protein Families:	Druggable Genome, Secreted Protein
Protein Pathways:	GnRH signaling pathway, Neuroactive ligand-receptor interaction



[View online »](#)

Product images:

Immunohistochemistry staining of Paraffin Pituitary tissue by FSH antibody (dilution: 1:25 - 1:100; visualization of staining: Cytoplasmic)