

## Product datasheet for **TA327673**

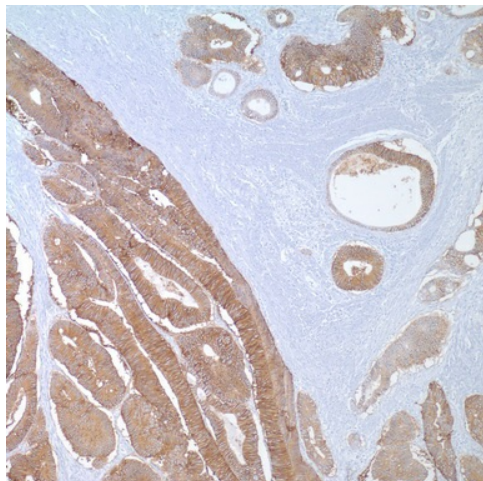
### EPCAM Mouse Monoclonal Antibody [Clone ID: MOC31]

#### Product data:

Product Type:	Primary Antibodies
Clone Name:	MOC31
Applications:	IHC
Recommended Dilution:	IHC: 1:50 - 1:200
Reactivity:	Human
Host:	Mouse
Isotype:	IgG1, kappa
Clonality:	Monoclonal
Formulation:	This antibody is supplied as cell culture supernatant diluted in tris buffered saline, pH 7.3-7.7, with 1% BSA and <0.1% sodium azide.
Conjugation:	Unconjugated
Storage:	Store at -20°C as received.
Stability:	Stable for 12 months from date of receipt.
Gene Name:	epithelial cell adhesion molecule
Database Link:	<a href="#">NP_002345</a> <a href="#">Entrez Gene 4072 Human P16422</a>
Synonyms:	4; DIAR5; EGP-2; EGP40; EGP314; ESA; HNPCC8; KS1; KSA; M4S1; MIC18; MK-1; TACSTD1; TROP1
Note:	Anti-MOC-31 reacts with a transmembrane glycoprotein present on most glandular epithelium and tumors originating from such epithelium. This antibody has been used to distinguish adenocarcinoma from mesothelioma and hepatocellular carcinoma. This antibody is also useful in distinguishing serous carcinomas of the ovary from mesothelioma.
Protein Families:	ES Cell Differentiation/IPS, Transmembrane



[View online »](#)

**Product images:**

Immunohistochemistry staining of Paraffin Colon carcinoma tissue by Ep-CAM/Epithelial Specific Antigen antibody (dilution: 1:50 - 1:200; visualization of staining: Cytoplasmic)