

## Product datasheet for **TA327672**

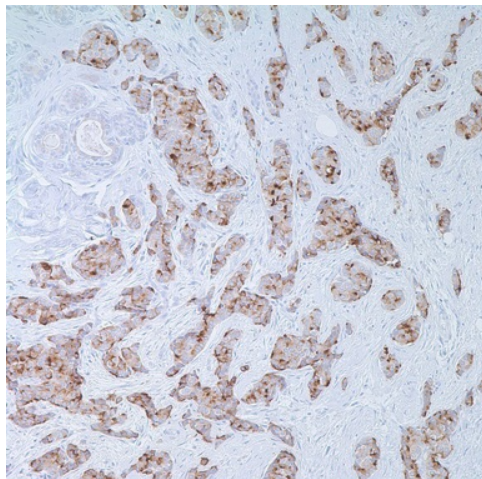
### EMA (MUC1) Mouse Monoclonal Antibody [Clone ID: E29]

#### Product data:

Product Type:	Primary Antibodies
Clone Name:	E29
Applications:	IHC
Recommended Dilution:	IHC: 1:100 - 1:500
Reactivity:	Human
Host:	Mouse
Isotype:	IgG2a, kappa
Clonality:	Monoclonal
Formulation:	This antibody is supplied as cell culture supernatant diluted in tris buffered saline, pH 7.3-7.7, with 1% BSA and <0.1% sodium azide.
Conjugation:	Unconjugated
Storage:	Store at -20°C as received.
Stability:	Stable for 12 months from date of receipt.
Gene Name:	mucin 1, cell surface associated
Database Link:	<a href="#">NP_002447</a> <a href="#">Entrez Gene 4582 Human P15941</a>
Synonyms:	ADMCKD; ADMCKD1; CA 15-3; CD227; EMA; H23AG; KL-6; MAM6; MCD; MCKD; MCKD1; MUC-1; SEC
Note:	Anti-EMA is a useful marker for staining many carcinomas. It stains normal and neoplastic cells from various tissues, including mammary epithelium, sweat glands, and squamous epithelium. Hepatocellular carcinoma, adrenal carcinoma, and embryonal carcinomas are consistently EMA negative, so keratin positivity with negative EMA favors one of these tumors. Anti-EMA is frequently positive in meningioma, which can be useful when distinguishing it from other intracranial neoplasms, e.g. Schwannomas.
Protein Families:	Druggable Genome, Secreted Protein, Transmembrane



[View online »](#)

**Product images:**

Immunohistochemistry staining of Paraffin Breast tissue by EMA antibody (dilution: 1:100 - 1:500; visualization of staining: Cytoplasmic, membranous)